

Richard Reti (1889–1929) composed a number of great endgame studies. Here are two of my favorite pawn endgame studies.

The following study is perhaps his most famous, beautiful in its simplicity.

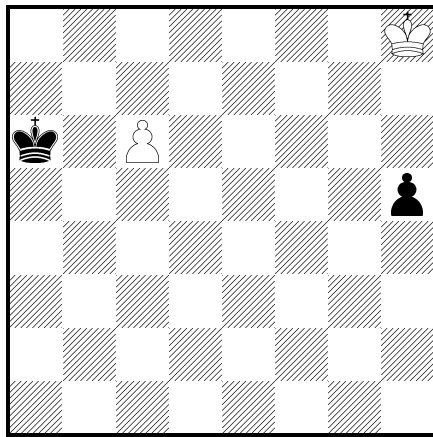
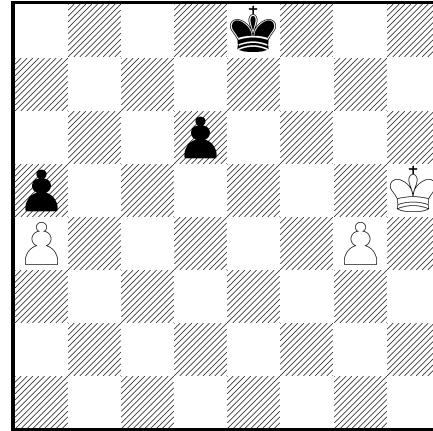
○ Reti, Richard

● Study

Kagan's Neueste Schachnachrichten

1921

1/2-1/2



1. ♖g7 h4

(1... ♜b6 2. ♜f6 h4 3. ♜e5 h3
4. ♜d6 h2 5. c7 =)

2. ♜f6 ♜b6

(2... h3 3. ♜e6 =)

3. ♜e5 1/2-1/2

The study below was dedicated to Julius Breyer, and is based on coordinate squares theory.

○ Reti, Richard

● Study

Berliner Tageblatt

1923

1-0

1. ♜g5!

(1. ♜g6 ♜e7 2. ♜f5 (2.g5 d5
3. ♜h7 d4 4.g6 d3 5.g7 d2
6.g8=♚ d1=♚ =) 2... ♜f7
3. ♜e4 ♜g6 4. ♜d5 ♜g5 5. ♜xd6
♜xg4 6. ♜c5 ♜f5 7. ♜b5 ♜e6
8. ♜xa5 ♜d7 9. ♜b6 ♜c8 =)

1... ♜f7

(1... ♜e7 2. ♜g6! wins as below.
)

2. ♜f5 ♜e7 3. ♜g6 (zugzwang) 3... ♜e6

(3... d5 4. ♜f5 ♜d6 5.g5 +-)

4.g5 1-0