

Latvian Gambit corner (C40)

By John Elburg

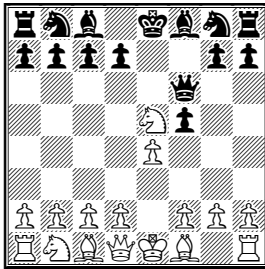
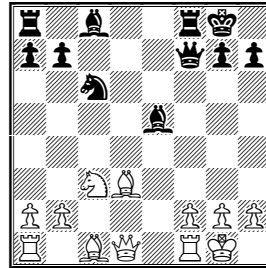
Latvian Gambit (C40)

Kiyotaka Sakai (JPN, 2571) –

John Elburg (NED, 2356)

4WCHLG Final “Hage Memorial” 2002

1 e4 e5 2 ♖f3 f5 3 ♜xe5 ♗f6



A bright move from the German master Leonhardt. Leo Diepstraten found, it was also mentioned by Cozio back in 1760.

4 ♜c4 fxe4 5 ♜c3 ♗f7

Gunderam's move is simply the best way to get some play for the sacrificed pawn.

6 ♜e3 c6 7 d3

A nice attacking idea from Budovskis.

7...exd3 8 ♜xd3 d5 9 0-0 ♜c5

In ‘The Latvian Gambit Lives’, Tony Kosten wrote: “In this main line Black is nearly lost, and there being no obvious improvements for Black this move must be considered doubtful.”

10 ♜a4 ♜d6 11 c4 ♜e7 12 ♜c3 0-0!

Better than 12...♜e6?! which I played in a training game against Tony Kosten.

13 cxd5 cxd5 14 ♜exd5 ♜xd5 15 ♜xd5 ♜c6 16 ♜c3 ♜e5

Of course Black is a pawn down and you would expect that a strong player as White with a ICCF rating of 2589 would easily win. However, the black position is quite stable and therefore Black has some reasonable drawing chances.

17 ♜e3 ♜e6 18 ♗c2 ♗h5 19 f4 ♜f6
20 ♗d1 ♗xd1 21 ♜fxd1 ♜fe8 22 g3
♜b4 23 ♗f2 ♜xd3+ 24 ♜ad8 ♜ad8
25 ♜ad1 ♜xd3 26 ♜xd3 ♜f5 27 ♜d5
♜e6 28 ♜c5 a6 29 ♜c7 ♜e7 30 ♜xe7
♜xe7 31 b3 ♜b4 32 ♜e4 ♜d5 33 ♜g5
b5 34 ♗e2 ♜e7 35 ♜f3 a5 36 ♜d4 a4
37 ♜xb5 axb3 38 axb3 ♜xb3 39 ♗d3
♗f7 40 ♜d4 ♜d5 41 ♜e5 ♜g2 42 ♗d4
g6 43 ♜d6 ♜f1 44 ♜xe7 ½-½.

Derecho Inaki –John Elburg

corr, 1999

1 e4 e5 2 ♜f3 f5 3 exf5!?

This move goes far back to Polerio, 1575, and Greco, 1621. Later it was analysed in great detail by Bilguer in his famous ‘Handbuch’.

3...♜c5?!

One of my pet lines in the Latvian.

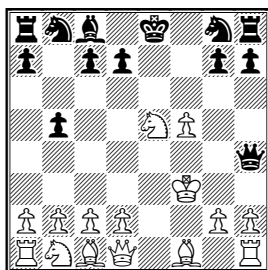
4 ♜xe5

4 ♖c3 b5 5 ♗e4 ♜e7 6 ♗xc5 ♝xc5 7 ♝e2 ♗e7 8 c3 ♗b7 9 ♗h4 0-0 10 ♝xb5 ♝xb5 11 ♗xb5 ♗xf5 12 ♗xf5 ♜xf5 13 0-0 ♗c6 14 d3 d5 15 f4 ♜af8 16 g4 ♜5f7 17 f5 h5 18 h3 hxg4 19 hxg4 ♗b8 20 ♗e3 ♗c6 21 a4 a6 22 ♗xc6 ♗xc6 23 ♗c5 ♜e8 24 ♜ae1 g6 25 fxg6 ♜xf1+ 26 ♜xf1 ♜e6 27 ♜g2 e4 28 dxe4 dxe4 29 g5 ♜g7 30 ♜f6 ♜xf6 31 gxf6+ ♜xf6 32 ♜g3 ♗d8 33 g7 ♜xg7 34 ♗d4+ ♜f7 35 ♜f4 c5 36 ♗e3 ♜e6 37 ♜xe4 ♗b7 38 b4 ♗d6+ 39 ♜d3 cxb4 40 cxb4 ♜d5 41 ♗d4 ♜c6 42 ♗e5 ♗c8 43 ♗d4 ½-½ I.Davis-Elburg, training corr game 2002.

4...♗xf2+ 5 ♜xf2 ♝h4+ 6 ♜f3

6 g3 ♗d4+ 7 ♜g2 ♝xe5 8 ♜e2 d6 9 ♝xe5+ dxe5 10 g4 h5 11 h3 b6 12 ♗b5+ c6 13 ♗e2= Hassenzhal-Keffler, corr 1973.

6...b5!?



Much more interesting than the simple 6... b6.

7 ♝e2

Best! 7 d4 ♗f6 when:

a) 8 ♜e2 0-0 9 ♗d3 d6 10 ♗f3 ♝g4 11 ♜d1 b4 12 ♝b3+ ♜h8 13 ♝xb4 ♗xf5 14 h3 ♝g3 15 ♝e1 ♝g6 16 ♗a3 ♗e4 17 ♜g1 ♗c6 18 ♗h4 ♝f6 19 ♗xf5 ♝xf5 20 ♗e3 d5 21 ♗b5 ♜ae8 22 ♗xc7 ♜e7 23 ♗b5 ♜fe8 24 ♗d3 ♝h5+ 25 ♗e2 ♝g6 26 ♗d3 ♝h5+ 27 ♗e2 ♝g6 28 g4 a6 29 ♝h4 axb5 30 ♜c1

♗b4 31 ♗d1 ♜c7 32 ♜g2 ♗d6 33 a3 ♗d3+ 34 ♜b1 ♗xb2 35 ♜xb2 ♗c4+ 36 ♜c1 ♗xe3 37 ♜e2 ♝e4 38 ♜a2 ♝xd4 39 ♜d2 ♝c4 40 ♜b2 b4 41 ♗e2 ♝e4 42 ♝g3 bxa3 43 ♜a2 ♜ec8 44 ♗d1 ♗xd1 45 ♜xd1 ♜b7 46 ♜d3 ♝h1+ 0-1 John Russell-Elburg, training game 2002.

b) 8 ♗c3 ♗b7+ 9 ♜e3!?! b4 10 ♗e2 ♗d5+ 11 ♜d2 0-0 12 ♗f3 ♝e4 13 ♝e1 ♜e8 14 ♜d1 ♝xf5 15 ♝f2 ♗f6 16 ♗f4 ♗e4 17 ♝g1 g5!?! 18 ♗d3 g4 19 ♗fe5 d6 20 ♗c4 g3 (Even Fritz could not find this move!) 21 ♗e3 ♗d7 22 ♗e2 ♗df6 23 ♗f3 ♜ab8 24 ♗d2 (If 24 hxg3 ♗xg3 25 ♗xb7 ♗xh1 26 ♗c6 ♝g4+ 27 ♗f3 ♝h4 28 ♗d2 ♗e4 29 ♗xe4 ♜xe4 30 ♗e3 ♜be8 31 ♜d2 ♗g3 32 ♜e1 ♗f5 33 ♗xb4 ♗xe3 34 ♗xe3 c5 35 ♗d3 cxd4 36 ♗c4 ♝g5+ 37 ♜d1 ♝g4+ 38 ♜c1 ♜xe1+ 39 ♗xe1 ♝e6 is even better for Black!) 24 ..♗g4 25 ♗xg4 ♝xg4+ 26 ♜c1 c5 27 dxc5 dxc5 28 ♗f3 ♜bd8 29 ♜b1 c4 30 ♗de5 ♝f5 31 ♗xc4 ♜c8 32 ♗d4 ♝f6 33 ♗a5 ♗f2 34 ♝c1 ♗e4 35 ♜g1 ♗g4 36 ♜f1 ♝b6 0-1 J.Sveinsson-Elburg, training game corr 1999.

7...♗b7+ 8 ♜e3 ♗e7 9 ♗f3 ♗xf3 10 ♜xf3 ♗bc6!?

10...0-0□ 11 g3 ♝f6 12 ♜g2 ♝xf5 is okay for Black.

11 g3 ♗d4+ 12 ♜g2 ♝f6 13 ♝e4 0-0 14 ♗d3 d5 15 ♝h4 ♝xh4?! 16 gxh4 ♗exf5 17 ♗a3 c6 18 c3 ♗xh4+ 19 ♜h3 ♗df3 20 ♗c2 ♜f4 21 ♗e2 ♜e8

21...♜e4!?! 22 ♗e3 ♜f8 23 d3 ♜ee8 24 ♜f1+-.

22 ♗d1 ♜ee4 23 ♗d4 ♗g5+ 24 ♜g3 ♗f5+ 25 ♜g2 ♗xd4 26 cxd4 ♜xd4 27 d3 ♜f5 28 ♜e1 ♜f7 29 ♗e3 ♜b4 30 ♜g3 ♗e6 31 ♗g4 ♜f6 1-0.

So the Latvian Gambit does not always win!