



# Puzzler #1



*Chess is  
in its essence a game  
in its form an art and  
in its execution a science.*

*- Baron Tassilo von Heydebrand und der Lasa*

As shown below, exactly 64 characters are used in the chess quotation that's featured in this puzzler:

Chess is  
1 2 3 4 5 6 7

in its essence a game  
8 9 10 11 12 13 14 15 16 17 18 19 20 21 22 23 24

in its form an art and  
25 26 27 28 29 30 31 32 33 34 35 36 37 38 39 40 41

in its execution a science.  
42 43 44 45 46 47 48 49 50 51 52 53 54 55 56 57 58 59 60 61 62 63 64

These 64 characters have been written in a special sequence on the chess diagram on the left. They've been placed along a path that a knight might take when touring the entire board.

**Your job is to unravel the quotation in the diagram -- to trace the quote through all 64 squares. Write numbers in the small boxes to show the order the squares are used.**

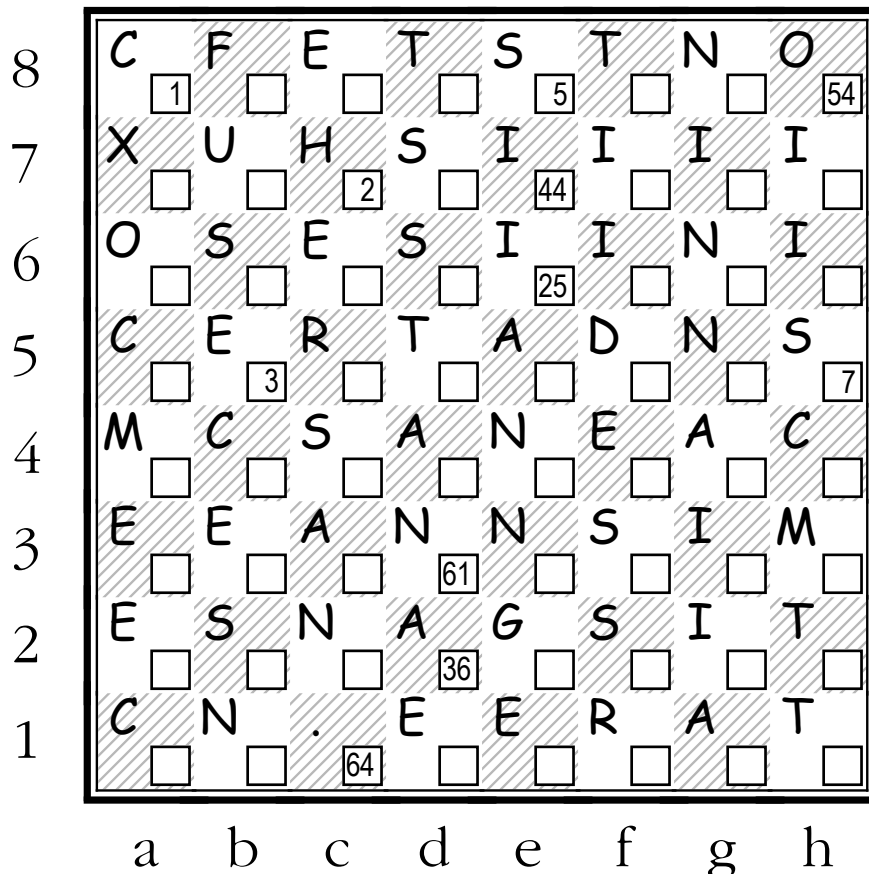
**Several squares are already numbered. To start unscrambling the quote, begin at a8.**

*Copyright © 2004 Prof. Chester Nuhmentz, Jr.*

Form may be reproduced for non-commercial use.

[www.professorchess.com](http://www.professorchess.com)

**Puzzler #1**





# Puzzler #2



*Chess is the greatest game ever invented -- because it only looks like a game.*

*- Scott Kerns*

As shown below, exactly 64 characters are used in the chess notation that's featured in this puzzler:

Chess is the greatest game  
1 2 3 4 5 6 7 8 9 10 11 12 13 14 15 16 17 18 19 20 21 22

ever invented -- because  
23 24 25 26 27 28 29 30 31 32 33 34 35 36 37 38 39 40 41 42 43

it only looks like a game.  
44 45 46 47 48 49 50 51 52 53 54 55 56 57 58 59 60 61 62 63 64

These 64 characters have been written in a special sequence on the chess diagram on the left. They've been placed along a path that a knight might take when touring the entire board.

**Your job is to unravel the quotation in the diagram -- to trace the quote through all 64 squares. Write numbers in the small boxes to show the order the squares are used.**

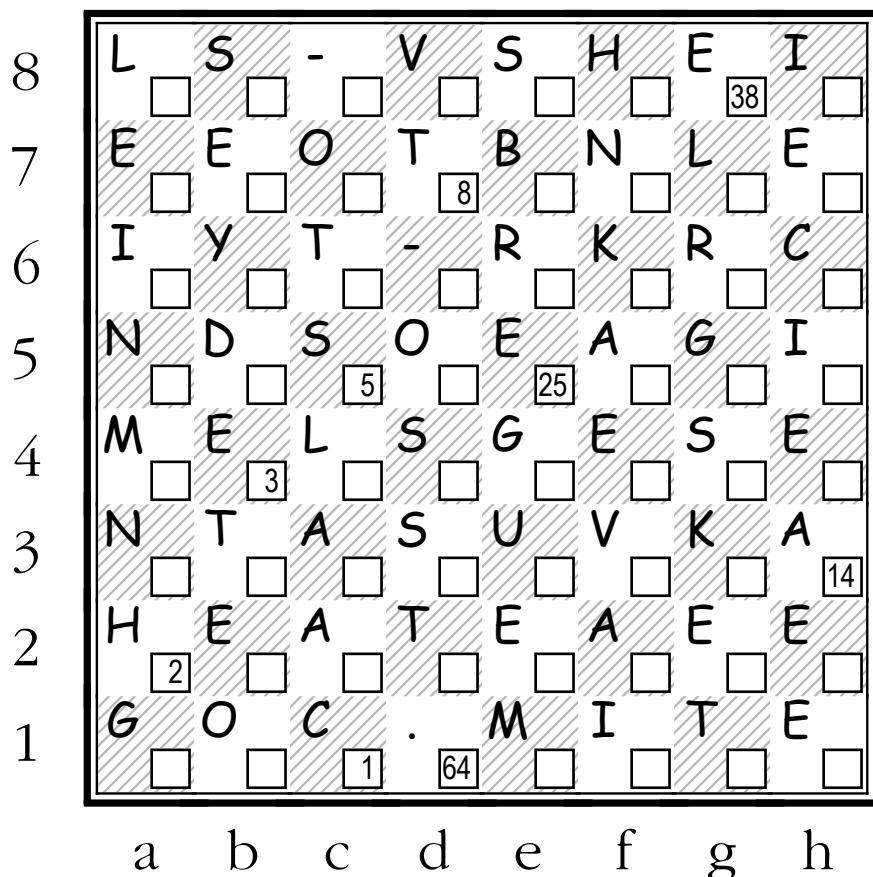
**Several squares are already numbered. To start unscrambling the quote, begin at c1.**

*Copyright © 2004 Prof. Chester Nuhmentz, Jr.*

Form may be reproduced for non-commercial use.

[www.professorchess.com](http://www.professorchess.com)

**Puzzler #2**





# Puzzler #3



*It is not a move,  
even the best move,  
that you must seek,  
but a realizable plan.*

*- Eugene Aleksandrovich Znosko-Borovsky*

As shown below, exactly 64 characters are used in the chess quotation that's featured in this puzzler:

It is not a move,  
1 2 3 4 5 6 7 8 9 10 11 12 13

even the best move,  
14 15 16 17 18 19 20 21 22 23 24 25 26 27 28 29

that you must seek,  
30 31 32 33 34 35 36 37 38 39 40 41 42 43 44 45

but a realizable plan.  
46 47 48 49 50 51 52 53 54 55 56 57 58 59 60 61 62 63 64

These 64 characters have been written in a special sequence on the chess diagram on the left. They've been placed along a path that a knight might take when touring the entire board.

**Your job is to unravel the quotation in the diagram -- to trace the quote through all 64 squares. Write numbers in the small boxes to show the order the squares are used.**

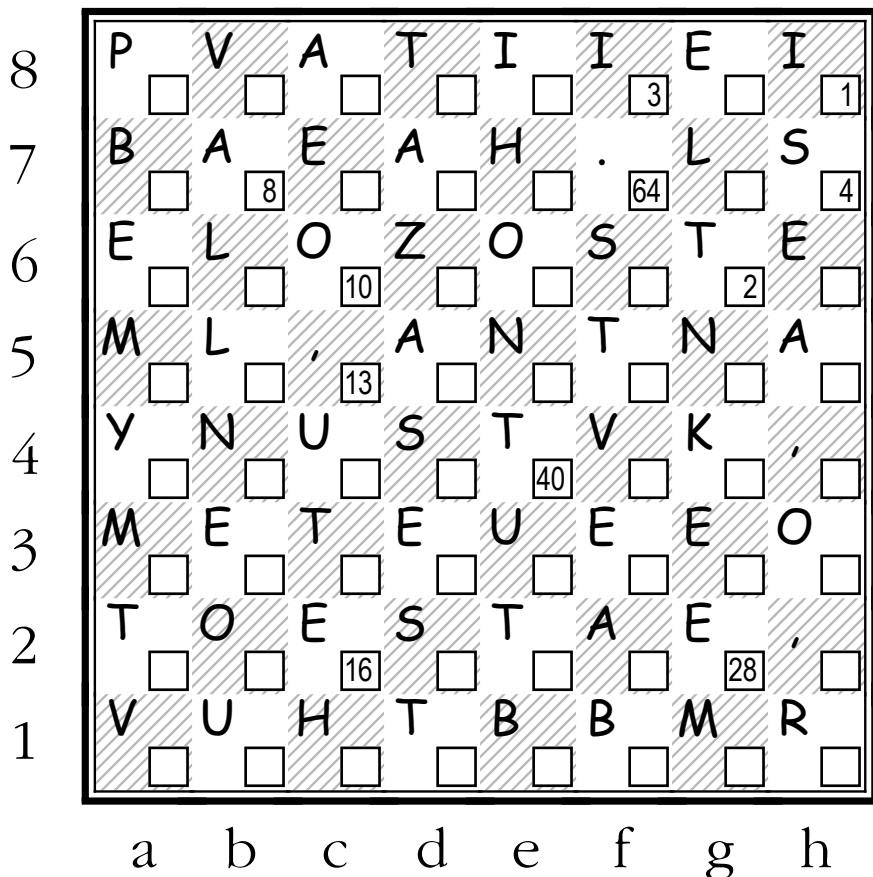
**Several squares are already numbered. To start unscrambling the quote, begin at h8.**

*Copyright © 2004 Prof. Chester Nuhmentz, Jr.*

Form may be reproduced for non-commercial use.

[www.professorchess.com](http://www.professorchess.com)

**Puzzler #3**





# Puzzler #4



*Chess mastery basically consists of analyzing game positions accurately.*

*- Mikhail Moiseevich Botvinnik*

As shown below, exactly 64 characters are used in the chess quotation that's featured in this puzzler:

Chess mastery basically  
1 2 3 4 5 6 7 8 9 10 11 12 13 14 15 16 17 18 19 20 21

consists of analyzing  
22 23 24 25 26 27 28 29 30 31 32 33 34 35 36 37 38 39 40

game positions accurately.  
41 42 43 44 45 46 47 48 49 50 51 52 53 54 55 56 57 58 59 60 61 62 63 64

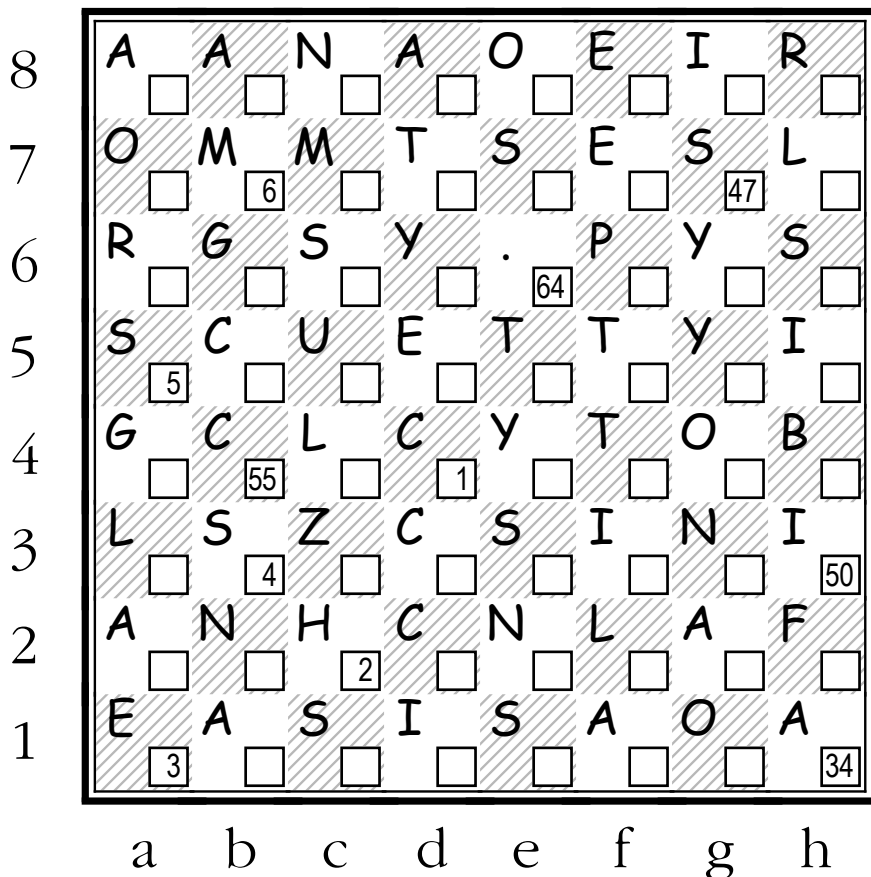
These 64 characters have been written in a special sequence on the chess diagram on the left. They've been placed along a path that a knight might take when touring the entire board.

**Your job is to unravel the quotation in the diagram -- to trace the quote through all 64 squares. Write numbers in the small boxes to show the order the squares are used.**

**Several squares are already numbered. To start unscrambling the quote, begin at d4.**

*Copyright © 2004 Prof. Chester Nuhmentz, Jr.*

Form may be reproduced for non-commercial use.





# Puzzler #5



*One day you give a chess lesson, the next day your opponent gives you a lesson.*

*- Bobby Fischer*

As shown below, exactly 64 characters are used in the chess quotation that's featured in this puzzler:

One day you give a chess  
1 2 3 4 5 6 7 8 9 10 11 12 13 14 15 16 17 18 19

lesson, the next day  
20 21 22 23 24 25 26 27 28 29 30 31 32 33 34 35 36

your opponent gives  
37 38 39 40 41 42 43 44 45 46 47 48 49 50 51 52 53

you a lesson.  
54 55 56 57 58 59 60 61 62 63 64

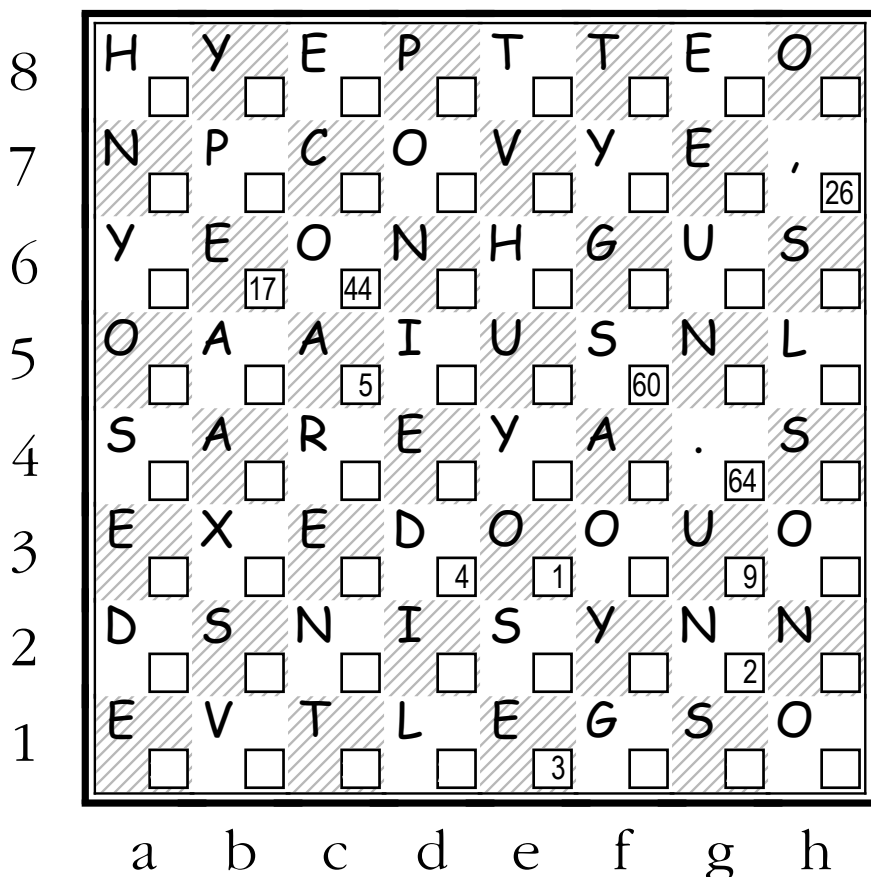
These 64 characters have been written in a special sequence on the chess diagram on the left. They've been placed along a path that a knight might take when touring the entire board.

**Your job is to unravel the quotation in the diagram -- to trace the quote through all 64 squares. Write numbers in the small boxes to show the order the squares are used.**

**Several squares are already numbered. To start unscrambling the quote, begin at e3.**

*Copyright © 2004 Prof. Chester Nuhmentz, Jr.*

Form may be reproduced for non-commercial use.





# Puzzler #6



*No chess grandmaster is normal; they only vary in the level of their madness.*

*- Viktor Korchnoi (Chess Grandmaster)*

As shown below, exactly 64 characters are used in the chess quotation that's featured in this puzzler:

No chess grandmaster is  
1 2 3 4 5 6 7 8 9 10 11 12 13 14 15 16 17 18 19 20

normal; they only vary  
21 22 23 24 25 26 27 28 29 30 31 32 33 34 35 36 37 38 39

in the level of their  
40 41 42 43 44 45 46 47 48 49 50 51 52 53 54 55 56

madness.  
57 58 59 60 61 62 63 64

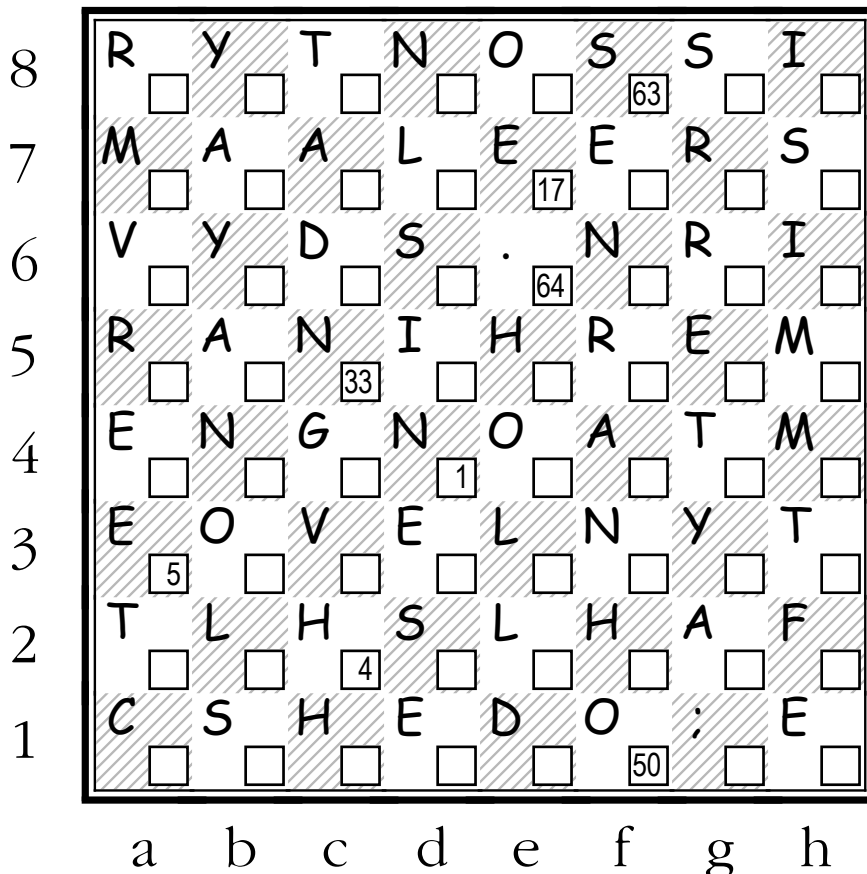
These 64 characters have been written in a special sequence on the chess diagram on the left. They've been placed along a path that a knight might take when touring the entire board.

**Your job is to unravel the quotation in the diagram -- to trace the quote through all 64 squares. Write numbers in the small boxes to show the order the squares are used.**

**Several squares are already numbered. To start unscrambling the quote, begin at d4.**

*Copyright © 2004 Prof. Chester Nuhmentz, Jr.*

Form may be reproduced for non-commercial use.





# Puzzler #7



*Lack of patience  
is probably the single  
most common reason  
for losing a game.*

*- Bent Larsen*

As shown below, exactly 64 characters are used in the chess quotation that's featured in this puzzler:

Lack of patience  
1 2 3 4 5 6 7 8 9 10 11 12 13 14

is probably the single  
15 16 17 18 19 20 21 22 23 24 25 26 27 28 29 30 31 32 33

most common reason  
34 35 36 37 38 39 40 41 42 43 44 45 46 47 48 49

for losing a game.  
50 51 52 53 54 55 56 57 58 59 60 61 62 63 64

These 64 characters have been written in a special sequence on the chess diagram on the left. They've been placed along a path that a knight might take when touring the entire board.

**Your job is to unravel the quotation in the diagram -- to trace the quote through all 64 squares. Write numbers in the small boxes to show the order the squares are used.**

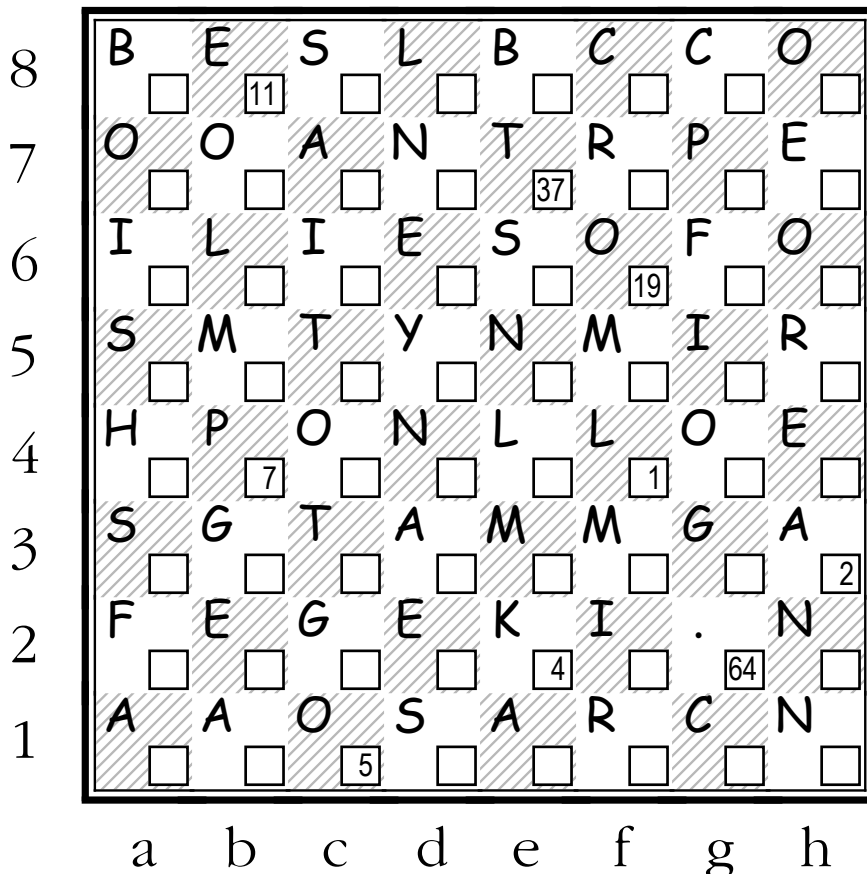
**Several squares are already numbered. To start unscrambling the quote, begin at f4.**

*Copyright © 2004 Prof. Chester Nuhmentz, Jr.*

Form may be reproduced for non-commercial use.

[www.professorchess.com](http://www.professorchess.com)

**Puzzler #7**





# Puzzler #8



*If your opponent offers you a draw try to work out why he thinks he is worse off.*

*- Nigel Short*

As shown below, exactly 64 characters are used in the chess quotation that's featured in this puzzler:

If your opponent  
1 2 3 4 5 6 7 8 9 10 11 12 13 14

offers you a draw  
15 16 17 18 19 20 21 22 23 24 25 26 27 28

try to work out why he  
29 30 31 32 33 34 35 36 37 38 39 40 41 42 43 44 45

thinks he is worse off.  
46 47 48 49 50 51 52 53 54 55 56 57 58 59 60 61 62 63 64

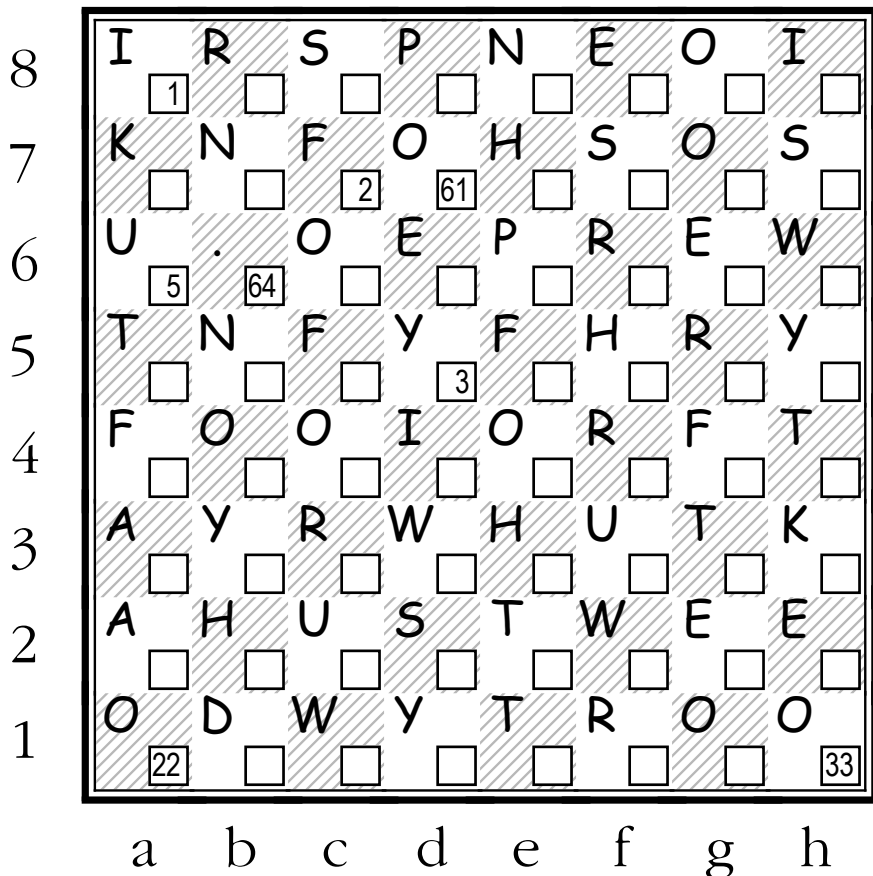
These 64 characters have been written in a special sequence on the chess diagram on the left. They've been placed along a path that a knight might take when touring the entire board.

**Your job is to unravel the quotation in the diagram -- to trace the quote through all 64 squares. Write numbers in the small boxes to show the order the squares are used.**

**Several squares are already numbered. To start unscrambling the quote, begin at a8.**

*Copyright © 2004 Prof. Chester Nuhmentz, Jr.*

Form may be reproduced for non-commercial use.







# Puzzler #9



*You can retreat pieces  
but not pawns.  
So always think twice  
about pawn moves.*

*- Michael Francis Stean*

As shown below, exactly 64 characters are used in the chess quotation that's featured in this puzzler:

You can retreat pieces  
1 2 3 4 5 6 7 8 9 10 11 12 13 14 15 16 17 18 19

but not pawns.  
20 21 22 23 24 25 26 27 28 29 30 31

So always think twice  
32 33 34 35 36 37 38 39 40 41 42 43 44 45 46 47 48 49

about pawn moves.  
50 51 52 53 54 55 56 57 58 59 60 61 62 63 64

These 64 characters have been written in a special sequence on the chess diagram on the left. They've been placed along a path that a knight might take when touring the entire board.

**Your job is to unravel the quotation in the diagram -- to trace the quote through all 64 squares. Write numbers in the small boxes to show the order the squares are used.**

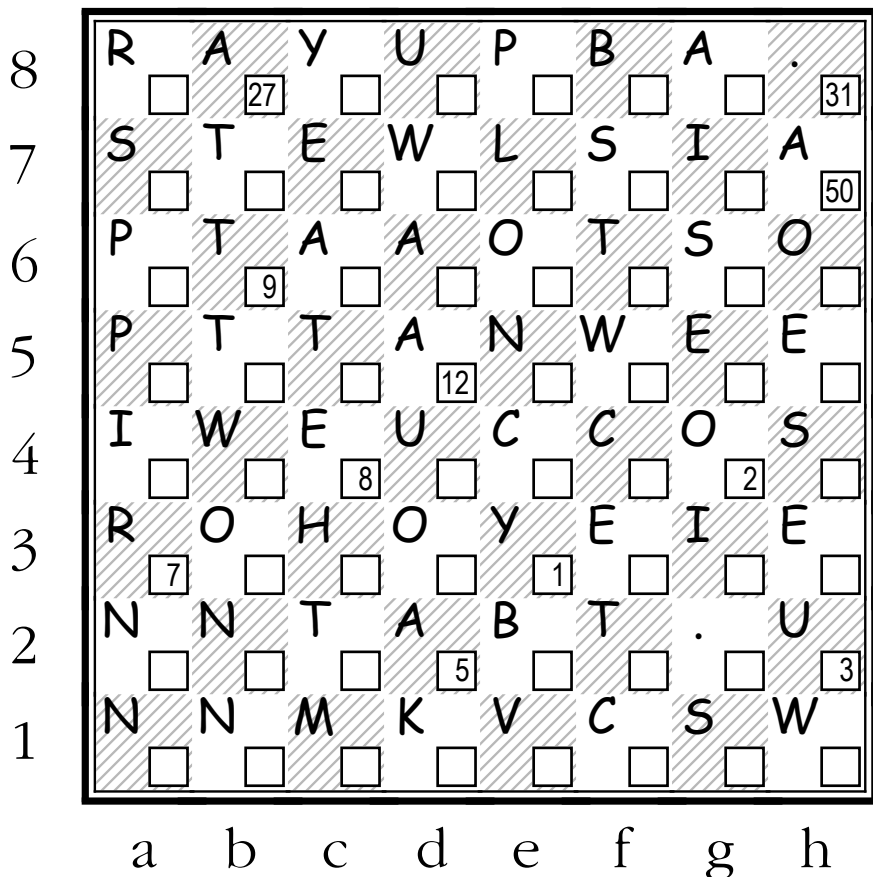
**Several squares are already numbered. To start unscrambling the quote, begin at e3.**

*Copyright © 2004 Prof. Chester Nuhmentz, Jr.*

Form may be reproduced for non-commercial use.

[www.professorchess.com](http://www.professorchess.com)

**Puzzler #9**





# Puzzler #10



*The winner of a chess game  
is the player who makes  
the next to the last  
mistake.*

*- Sawielly Grigoriewitsch Tartakower*

As shown below, exactly 64 characters are used in  
the chess quotation that's featured in this puzzler:

The winner of a chess game  
1 2 3 4 5 6 7 8 9 10 11 12 13 14 15 16 17 18 19 20 21

is the player who makes  
22 23 24 25 26 27 28 29 30 31 32 33 34 35 36 37 38 39 40

the next to the last  
41 42 43 44 45 46 47 48 49 50 51 52 53 54 55 56

mistake.  
57 58 59 60 61 62 63 64

These 64 characters have been written in a special  
sequence on the chess diagram on the left. They've  
been placed along a path that a knight might take  
when touring the entire board.

**Your job is to unravel the quotation in the  
diagram -- to trace the quote through all 64  
squares. Write numbers in the small boxes  
to show the order the squares are used.**

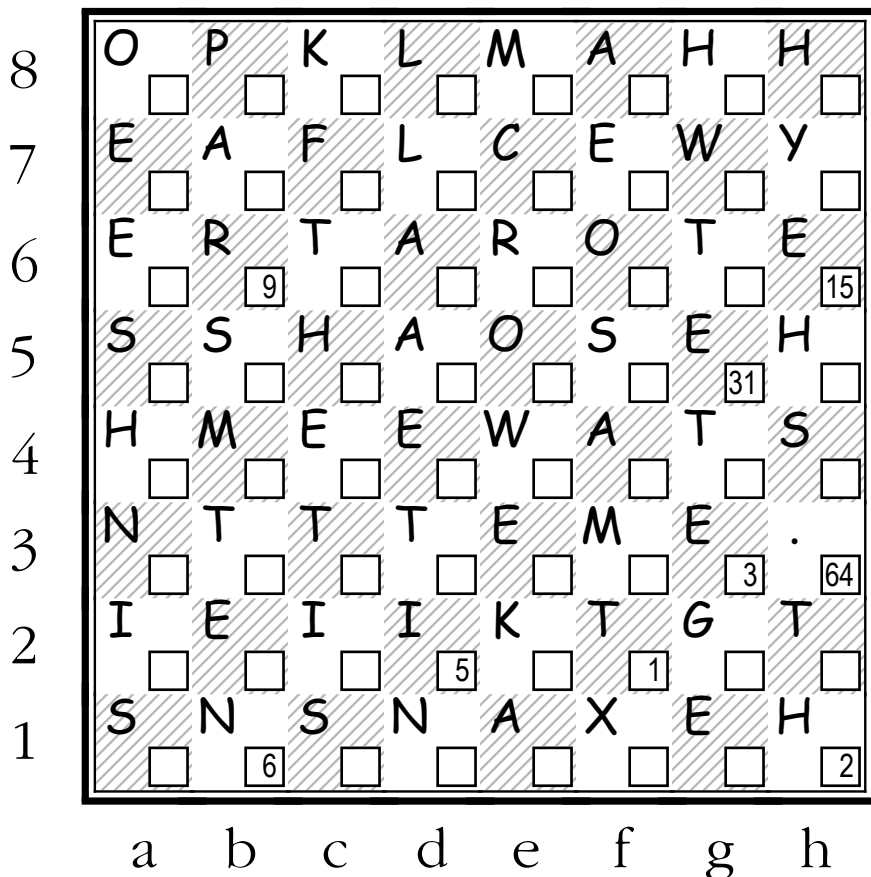
**Several squares are already numbered. To  
start unscrambling the quote, begin at f2.**

*Copyright © 2004 Prof. Chester Nuhmentz, Jr.*

Form may be reproduced for non-commercial use.

[www.professorchess.com](http://www.professorchess.com)

**Puzzler #10**





# Puzzler #11



*A passed pawn gains strength as the number of pieces on the board diminishes.*

*- Jose Raul Capablanca*

As shown below, exactly 64 characters are used in the chess notation that's featured in this puzzler:

A passed pawn gains  
1 2 3 4 5 6 7 8 9 10 11 12 13 14 15 16

strength as the number  
17 18 19 20 21 22 23 24 25 26 27 28 29 30 31 32 33 34 35

of pieces on the board  
36 37 38 39 40 41 42 43 44 45 46 47 48 49 50 51 52 53

diminishes.  
54 55 56 57 58 59 60 61 62 63 64

These 64 characters have been written in a special sequence on the chess diagram on the left. They've been placed along a path that a knight might take when touring the entire board.

**Your job is to unravel the quotation in the diagram -- to trace the quote through all 64 squares. Write numbers in the small boxes to show the order the squares are used.**

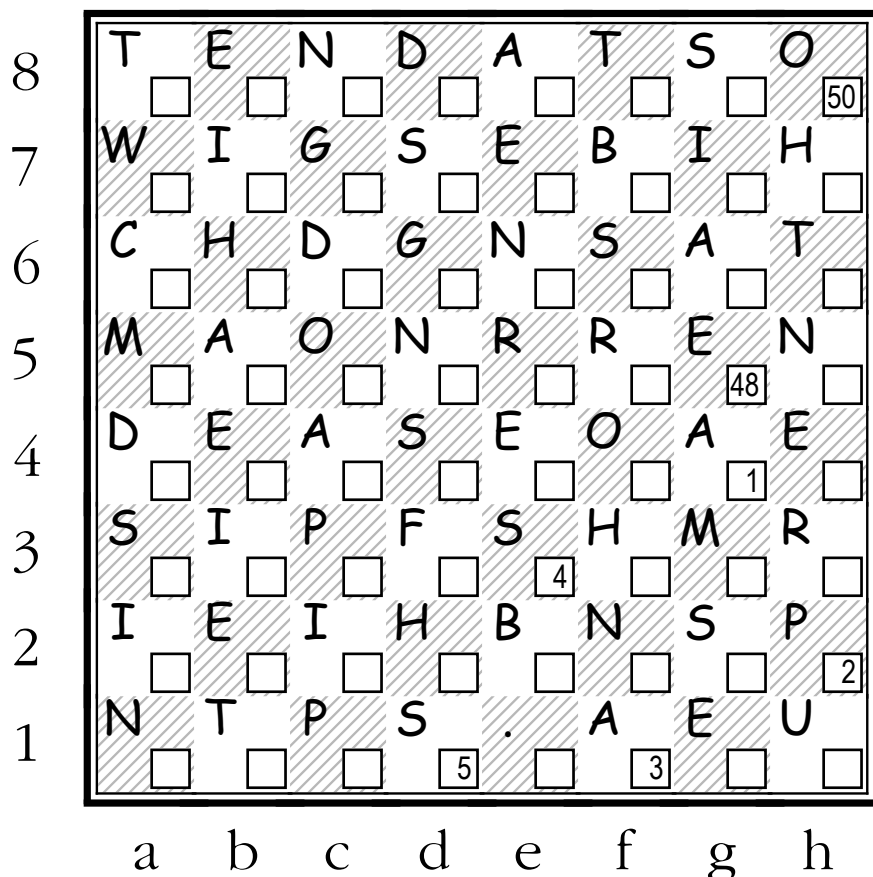
**Several squares are already numbered. To start unscrambling the quote, begin at g4.**

*Copyright © 2004 Prof. Chester Nuhmentz, Jr.*

Form may be reproduced for non-commercial use.

[www.professorchess.com](http://www.professorchess.com)

**Puzzler #11**





# Puzzler #12



*Although all artists are  
not chess players --  
all chess players  
are artists.*

*- Marcel Duchamp*

As shown below, exactly 64 characters are used in the chess quotation that's featured in this puzzler:

Although all artists are  
1 2 3 4 5 6 7 8 9 10 11 12 13 14 15 16 17 18 19 20 21

not chess players --  
22 23 24 25 26 27 28 29 30 31 32 33 34 35 36 37 38

all chess players  
39 40 41 42 43 44 45 46 47 48 49 50 51 52 53

are artists.  
54 55 56 57 58 59 60 61 62 63 64

These 64 characters have been written in a special sequence on the chess diagram on the left. They've been placed along a path that a knight might take when touring the entire board.

**Your job is to unravel the quotation in the diagram -- to trace the quote through all 64 squares. Write numbers in the small boxes to show the order the squares are used.**

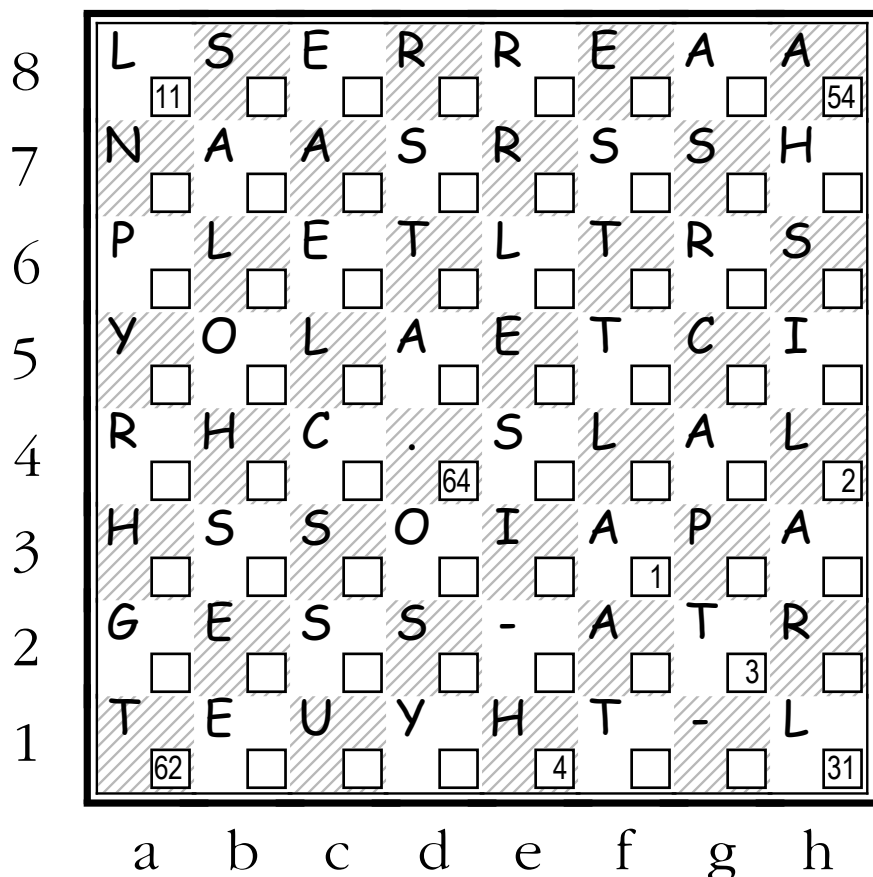
**Several squares are already numbered. To start unscrambling the quote, begin at f3.**

*Copyright © 2004 Prof. Chester Nuhmentz, Jr.*

Form may be reproduced for non-commercial use.

[www.professorchess.com](http://www.professorchess.com)

**Puzzler #12**





# Puzzler #13



*Chess is the only sport  
where players are  
still competitive  
after age sixty.*

*- Eugene Martinovsky*

As shown below, exactly 64 characters are used in the chess notation that's featured in this puzzler:

Chess is the only sport  
1 2 3 4 5 6 7 8 9 10 11 12 13 14 15 16 17 18 19

where players are  
20 21 22 23 24 25 26 27 28 29 30 31 32 33 34

still competitive  
35 36 37 38 39 40 41 42 43 44 45 46 47 48 49 50

after age sixty.  
51 52 53 54 55 56 57 58 59 60 61 62 63 64

These 64 characters have been written in a special sequence on the chess diagram on the left. They've been placed along a path that a knight might take when touring the entire board.

**Your job is to unravel the quotation in the diagram -- to trace the quote through all 64 squares. Write numbers in the small boxes to show the order the squares are used.**

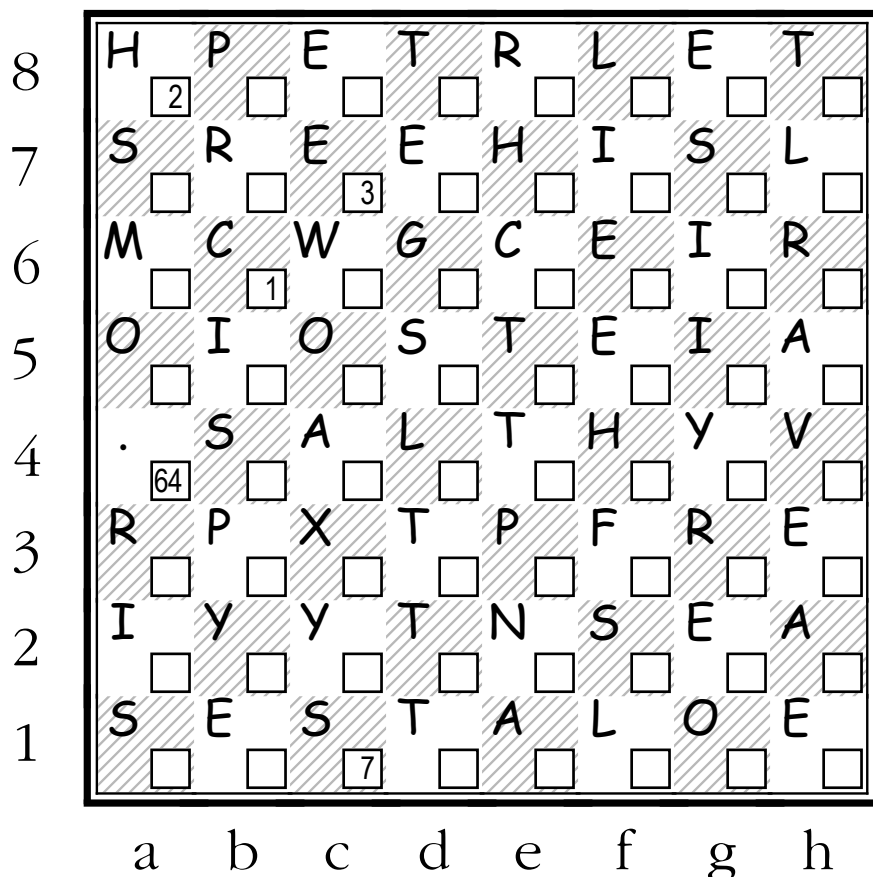
**Several squares are already numbered. To start unscrambling the quote, begin at b6.**

*Copyright © 2004 Prof. Chester Nuhmentz, Jr.*

Form may be reproduced for non-commercial use.

[www.professorchess.com](http://www.professorchess.com)

**Puzzler #13**





# Puzzler #14



*Chess is a part of culture  
and if culture is declining  
chess too will decline.*

*- Mikhail Moiseevich Botvinnik*

As shown below, exactly 64 characters are used in the chess quotation that's featured in this puzzler:

Chess is a part of culture  
1 2 3 4 5 6 7 8 9 10 11 12 13 14 15 16 17 18 19 20 21

and if culture is declining  
22 23 24 25 26 27 28 29 30 31 32 33 34 35 36 37 38 39 40 41 42 43 44

chess too will decline.  
45 46 47 48 49 50 51 52 53 54 55 56 57 58 59 60 61 62 63 64

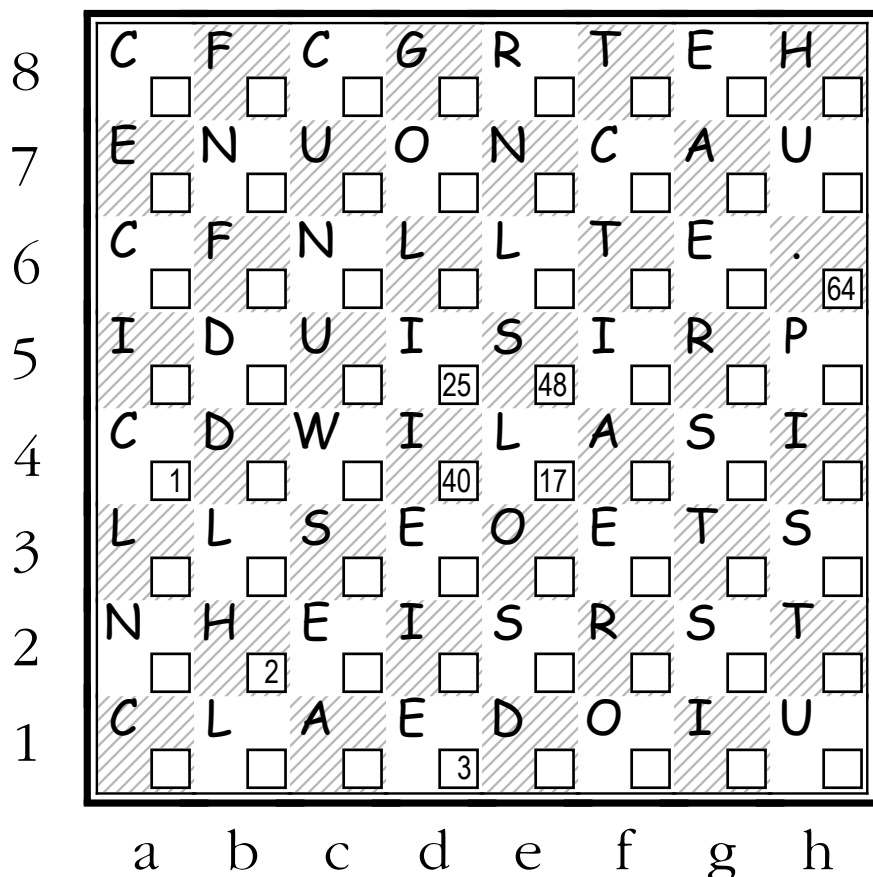
These 64 characters have been written in a special sequence on the chess diagram on the left. They've been placed along a path that a knight might take when touring the entire board.

**Your job is to unravel the quotation in the diagram -- to trace the quote through all 64 squares. Write numbers in the small boxes to show the order the squares are used.**

**Several squares are already numbered. To start unscrambling the quote, begin at a4.**

*Copyright © 2004 Prof. Chester Nuhmentz, Jr.*

Form may be reproduced for non-commercial use.





# Puzzler #15



*Moves on the board  
can be no stronger  
than those played first  
in imagination.*

*- Prof. Chester Nuhmentz*

As shown below, exactly 64 characters are used in the chess quotation that's featured in this puzzler:

Moves on the board  
1 2 3 4 5 6 7 8 9 10 11 12 13 14 15

can be no stronger  
16 17 18 19 20 21 22 23 24 25 26 27 28 29 30

than those played first  
31 32 33 34 35 36 37 38 39 40 42 43 44 45 46 47 48 49 50

in imagination.  
51 52 53 54 55 56 57 58 59 60 61 62 63 64

These 64 characters have been written in a special sequence on the chess diagram on the left. They've been placed along a path that a knight might take when touring the entire board.

**Your job is to unravel the quotation in the diagram -- to trace the quote through all 64 squares. Write numbers in the small boxes to show the order the squares are used.**

**Several squares are already numbered. To start unscrambling the quote, begin at f2.**

*Copyright © 2004 Prof. Chester Nuhmentz, Jr.*

Form may be reproduced for non-commercial use.

