

# Puzzler #32

In your own words,  
write what's wrong  
(not allowed) in  
this position.

---



---



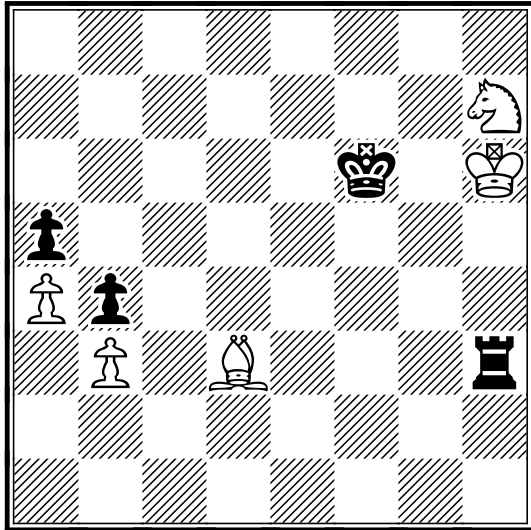
---



---



---



In your own words,  
write what's wrong  
(not allowed) in  
this position.

---



---



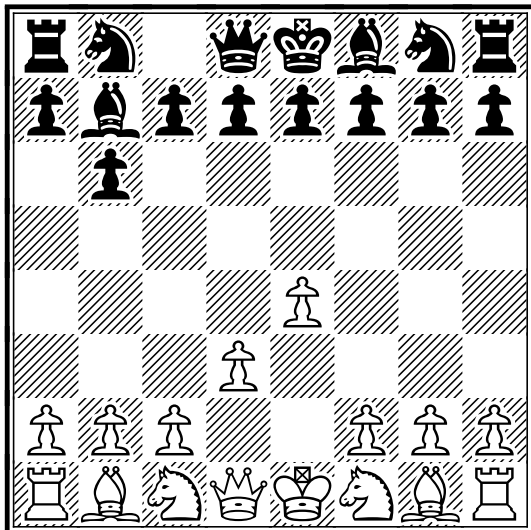
---



---



---



In your own words,  
write what's  
incorrect about this  
starting position.

---



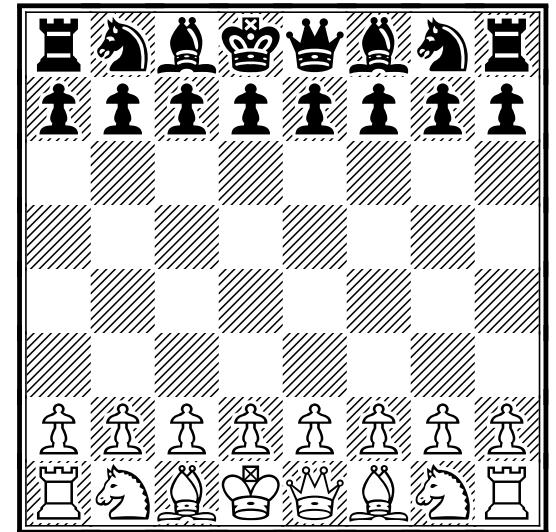
---



---



---



In your own words,  
write what's  
incorrect about this  
starting position.

---



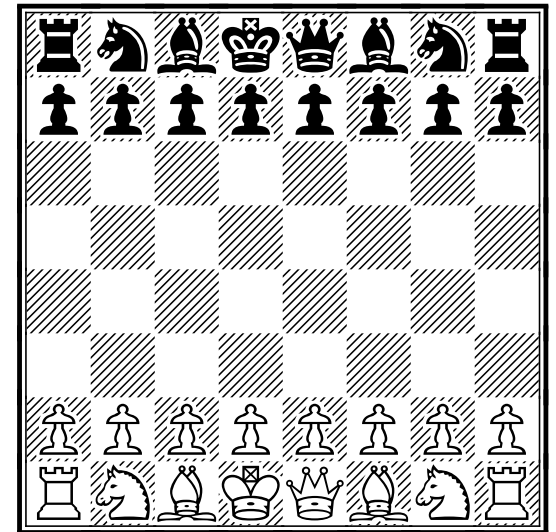
---



---



---



# Puzzler #33

Explain why White is not allowed to make the move **Nxg7**.

---



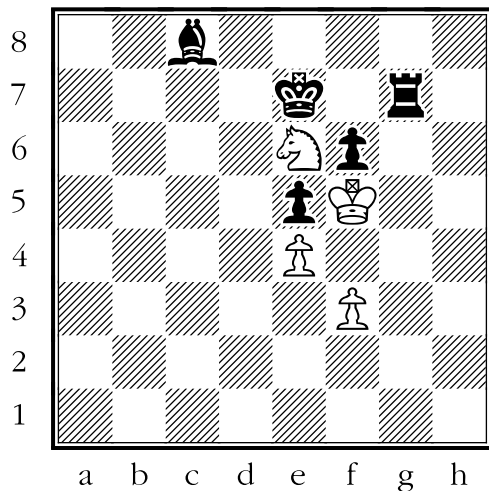
---



---



---



Explain why White is not allowed to make the move **Re5+**.

---



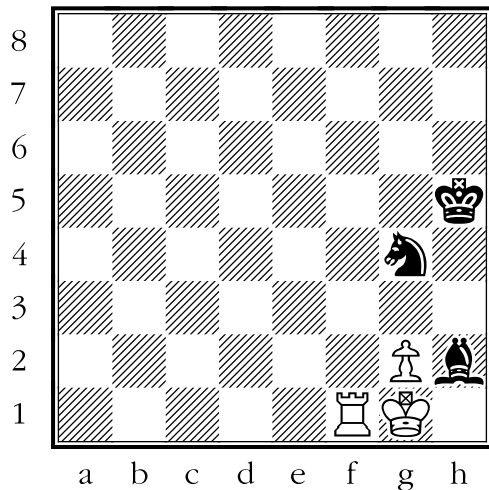
---



---



---



Explain why White is not allowed to castle on the queen side (0-0-0).

---



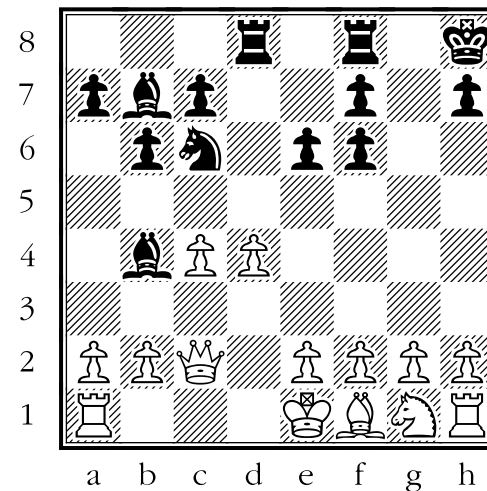
---



---



---



Explain why White is not allowed to castle on the queen side (0-0-0).

---



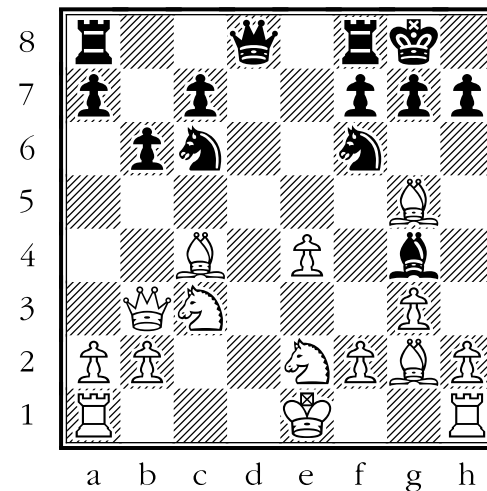
---



---



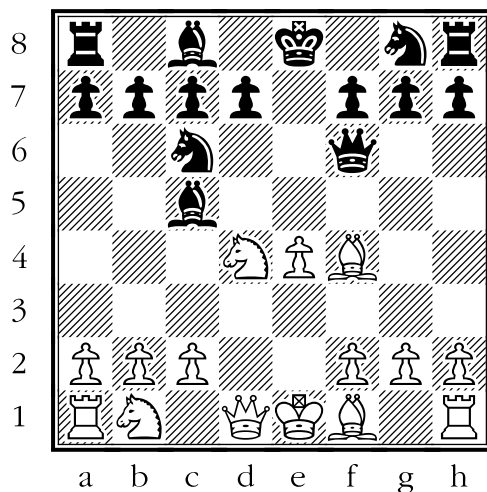
---



# Puzzler #34

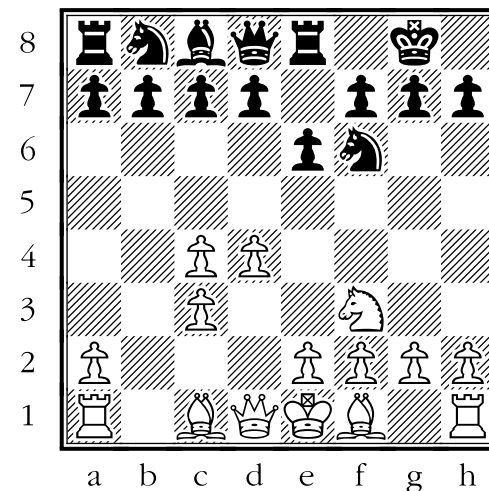
Circle the chessman that isn't where the score sheet says it should be.

White	Black
1) e2-e4	e7-e5
2) Ng1-f3	Nb8-c6
3) d2-d4	e5xd4
4) Nf3xd4	Bf8-c5
5) Bc1-e3	Qd8-f6



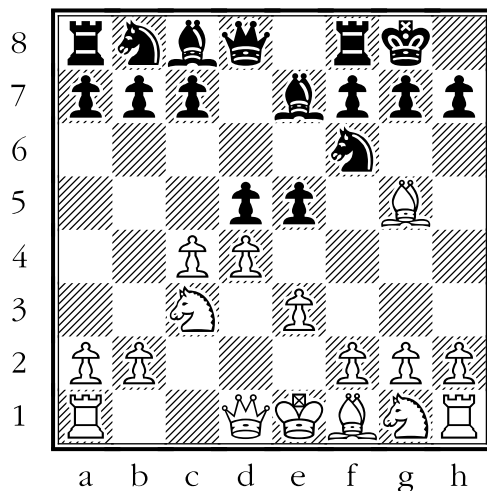
Circle the chessman that isn't where the score sheet says it should be.

White	Black
1) d2-d4	Ng8-f6
2) c2-c4	e7-e6
3) Ng1-f3	Bf8-b4+
4) Nb1-c3	Bxc3+
5) b2xc3	0-0



Circle the chessman that isn't where the score sheet says it should be.

White	Black
1) d2-d4	d7-d5
2) c2-c4	e7-e6
3) Nb1-c3	Ng8-f6
4) Bc1-g5	Bf8-e7
5) e2-e3	0-0



Circle the chessman that isn't where the score sheet says it should be.

White	Black
1) d2-d4	d7-d5
2) Bc1-f4	Ng8-f6
3) Ng1-f3	e7-e6
4) e2-e3	c7-c5
5) c2-c4	Nb8-c6

