

APPENDIX F:

**GRAPHICAL REPRESENTATION OF THE
SOURCE APPORTIONMENT RESULTS FOR
CHARLOTTE, NORTH CAROLINA**

Appendix F: Graphical Representation of the Source Apportionment Results for Charlotte, North Carolina

This appendix shows a series of nine plots for each source indicated by the PMF model for Charlotte, North Carolina. These plots are used to help identify the sources by understanding some of the characteristics of the sources. The plots included for each source are:

1. The source profile plot.
2. The time series of the source strength.
3. Bar charts of the source strength for various categories.
4. The source pollution rose.
5. The source region(s) as indicated by the source contribution function.
6. The source region(s) as indicated by the incremental probability function.
7. Back trajectories color coded by source strength.
8. Scatter plots of the source strength versus ambient temperature for each season and scatter plots of the source strength versus ambient pressure.

The profile plot shows the relative composition of the source (bars with the scale on the left) and the percent of the total species mass observed at the receptor attributed to the source (line with the scale on the right). The relative chemical composition is the main basis for the source identifications. Generally, the other plots are used to refine or confirm the identification made from this first plot.

The time series plot shows the source strength as a function of time. Two scales are shown. On the left is the source strength in $\mu\text{g}/\text{m}^3$ and on the right is the relative source strength, which is the daily source strength divided by the mean source strength. The latter is the direct output from the PMF model and can be used to compare events among sources.

The bar charts show the mean source strength when stratified by wind speed (including calm periods), weekday/weekend, and season (winter is December, January, and February). Each of these plots provides supplemental information for identifying the source.

The pollution rose shows the mean source strength by wind sector and wind speed category. These plots can indicate the source location for local sources. Winds less than 1 mph are not used in generating this plot, since the wind direction is not always clear for low winds. These periods are indicated in the bar charts.

The next two plots are the source regions as indicated by either the source contribution function (the probability of a high source day given that the back trajectory passes over the grid point) or the incremental probability function (the probability that source strength is high and the back trajectory passes over the grid point minus the probability that the back trajectory passes over the grid point). High and low days are defined as above. To minimize the effects of having too few trajectories within a grid cell, the plots for the source contribution function are of a lower bound for a 90 percent confidence interval for the probability of a high day. Hence, only the

areas that have a probability that is significantly above 20 percent are plotted. For the incremental probability plot, this same effect is avoided by dividing the incremental probability by its standard error and plotting the regions that are at least 1 standard error away from zero (in either direction). These modifications to the usual source contribution function and the incremental probability make it easier to compare the plots and the numerical values among different sources.

The back trajectory plots are color coded by source strength. The low source strength days are blue and represent the lowest 20 percent of the source strengths. The high source days are red and represent the highest 20 percent of the source strengths. The remainder of the back trajectories are plotted in green. These can give some indication of source region, but are usually too messy for that purpose. The main use for these plots is as noted above; they show when the effects of high pressure systems play a significant role in the source strength.

The first set of scatter plots shows any relationship between ambient temperature and the source strength. The plots are separated by season to keep extreme observations from dominating the relationship. Underneath these plots is a scatter plot that shows any relationship between local ambient pressure and the source strength. Very few sources show a relationship since source activity is rarely related to pressure. The source strength are more often modulated by the concentrating effects of high pressure systems located tangent to the site. These should be compared to the back trajectories for high source days (the previous plot). The back trajectories around high pressure systems will be clockwise ending at the receptor. Generally, the other source strength plots, in particular the remaining back trajectory source region plots, need to be discounted for this effect when it is present.

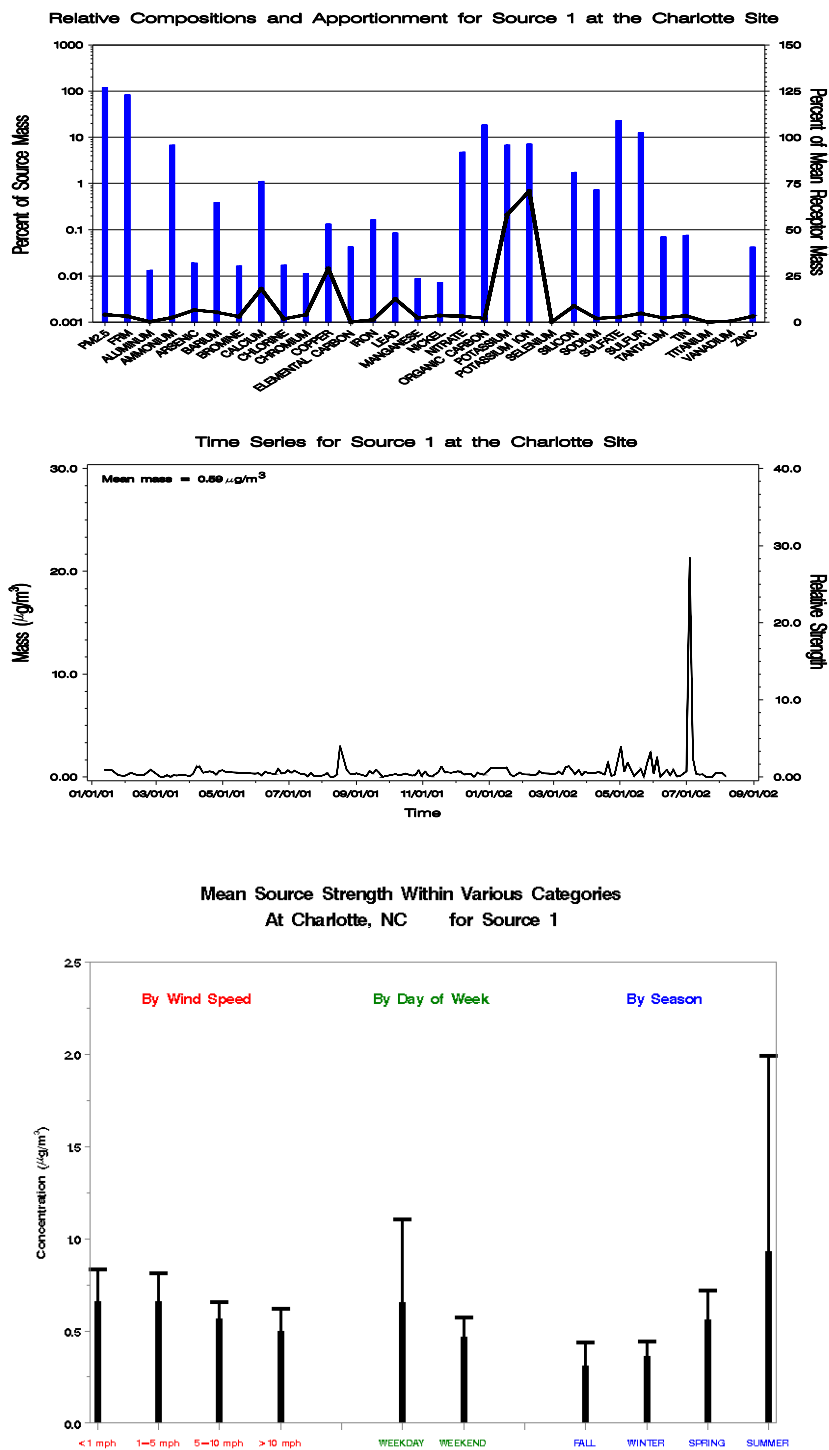


Figure F-1. Profile Plot (Top), Time Series Plot (Middle), and Bar Charts of the Source Strength Averaged by Wind Speed, Day of Week, and Season (Bottom) for Charlotte, North Carolina, Source 1 - Vegetative Burning and Fireworks.

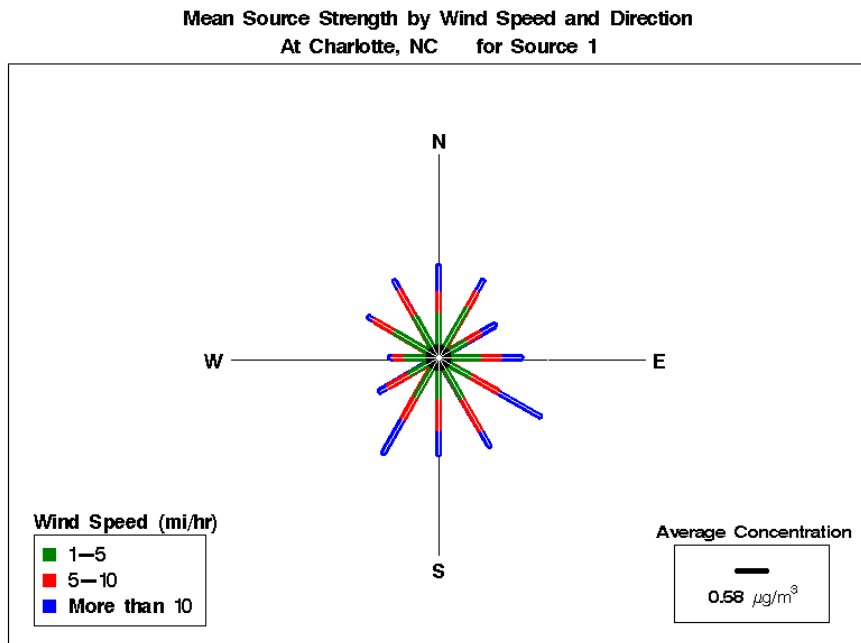


Figure F-2. Pollution Rose for Charlotte, North Carolina, Source 1 - Vegetative Burning and Fireworks.

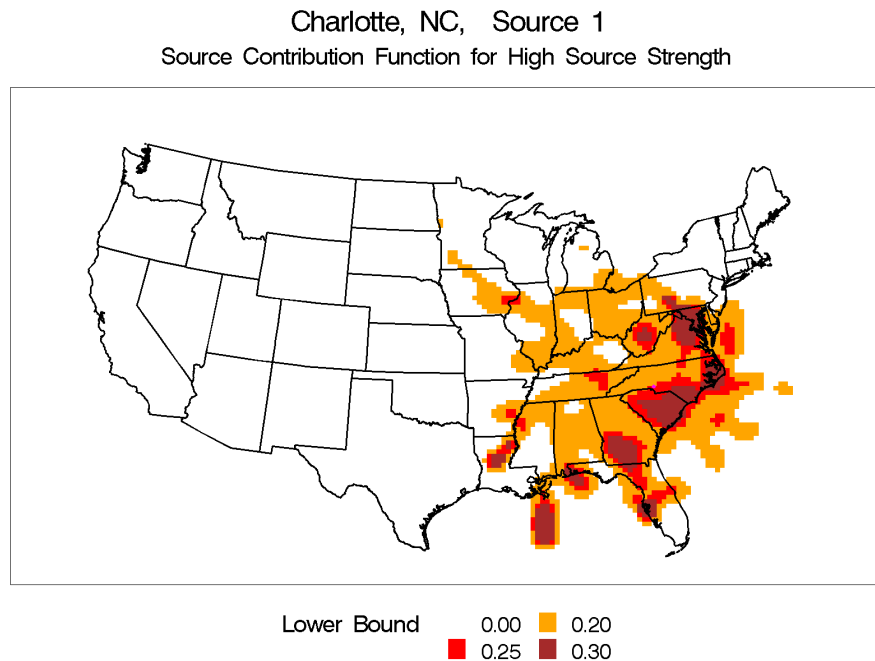


Figure F-3 Source Contribution Contour Plot for Charlotte, North Carolina, Source 1 - Vegetative Burning and Fireworks.

Charlotte, NC, Source 1
 Incremental Probability for High Source Strength

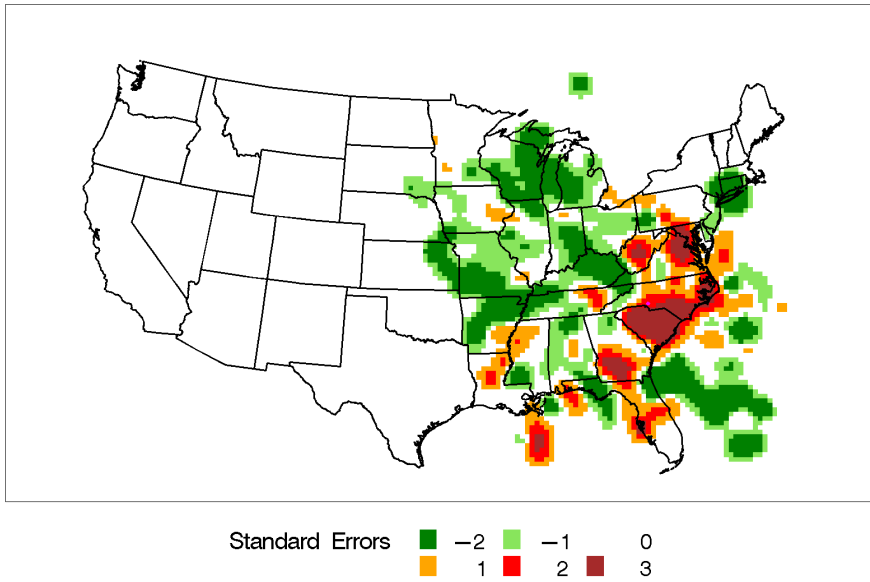


Figure F-4 Incremental Probability Contour Plot for Charlotte, North Carolina, Source 1 - Vegetative Burning and Fireworks

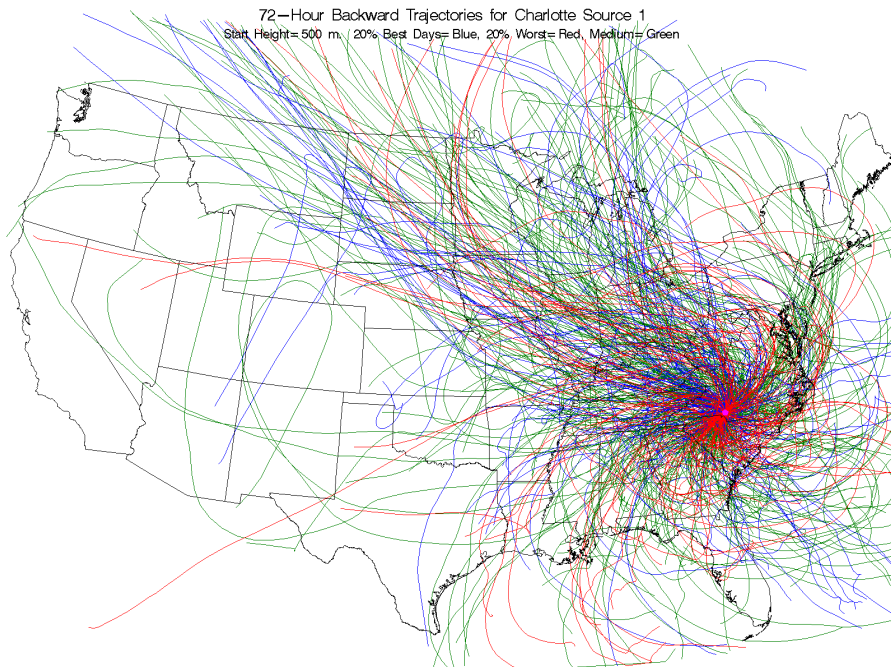
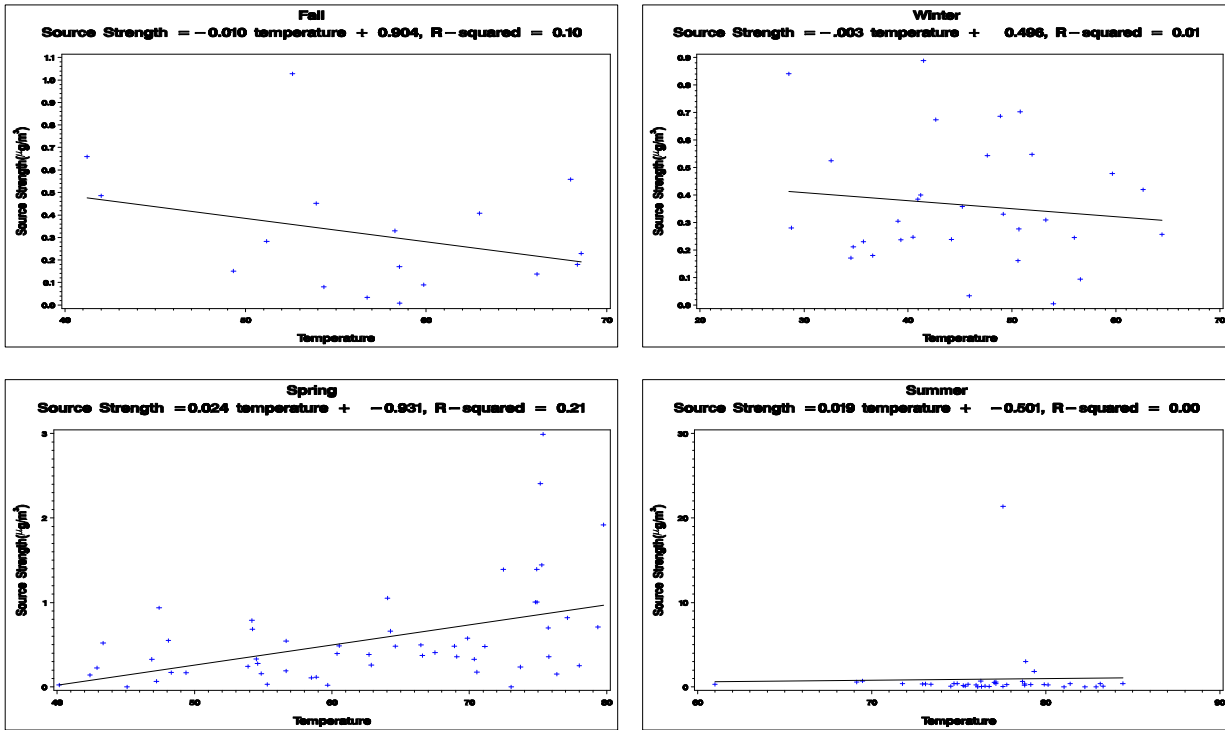


Figure F-5 Back Trajectories Color Coded by Source Strength Category for Charlotte, North Carolina, Source 1 - Vegetative Burning and Fireworks.

**Source Strength Versus Mean Daily Temperature
At Charlotte, NC for Source 1**



**Source Strength Versus Mean Daily Pressure
At Charlotte, NC for Source 1**

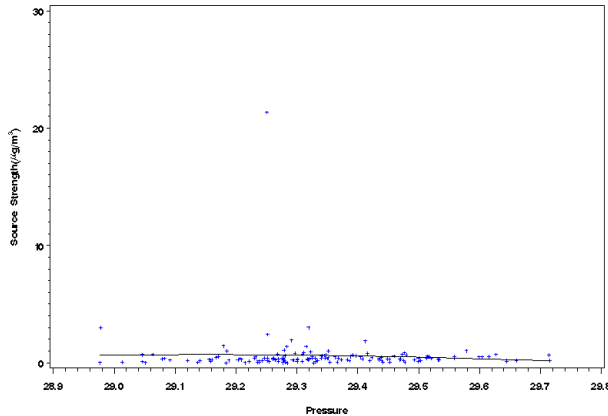


Figure F-6 Scatter Plot of Source Strength Versus Mean Daily Temperature (Rows 1 and 2) and Pressure (bottom) for Charlotte, North Carolina, Source 1 - Vegetative Burning and Fireworks.

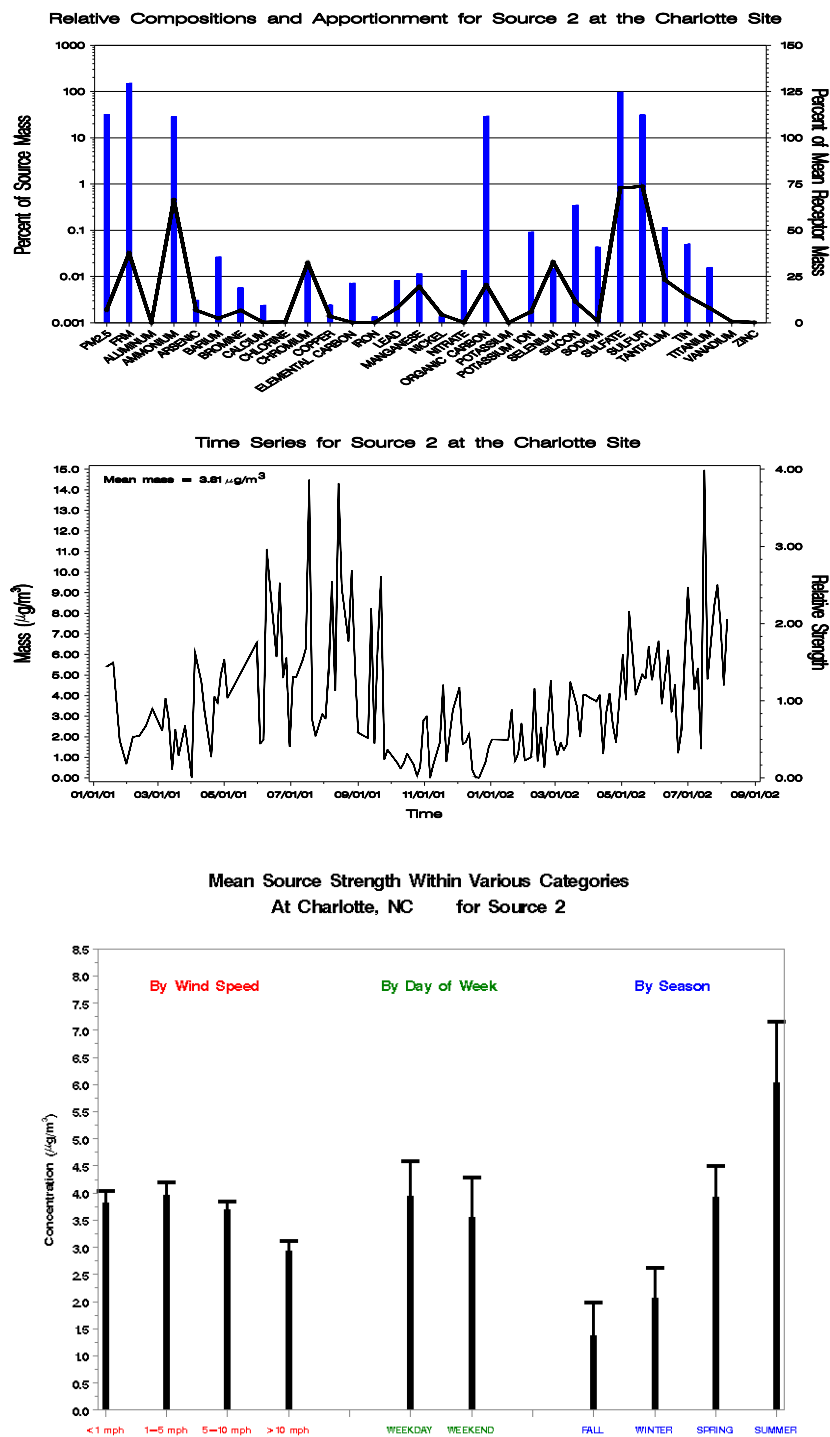


Figure F-7. Profile Plot (Top), Time Series Plot (Middle), and Bar Charts of the Source Strength Averaged by Wind Speed, Day of Week, and Season (Bottom) for Charlotte, North Carolina, Source 2 - Coal Combustion.

Mean Source Strength by Wind Speed and Direction
At Charlotte, NC for Source 2

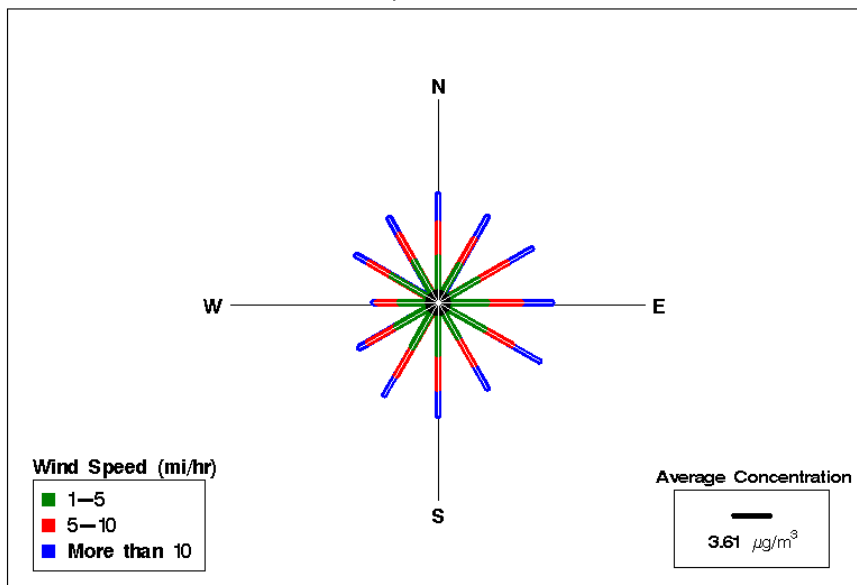


Figure G-8 Pollution Rose for Charlotte, North Carolina, Source 2 - Coal Combustion.

Charlotte, NC, Source 2
Source Contribution Function for High Source Strength

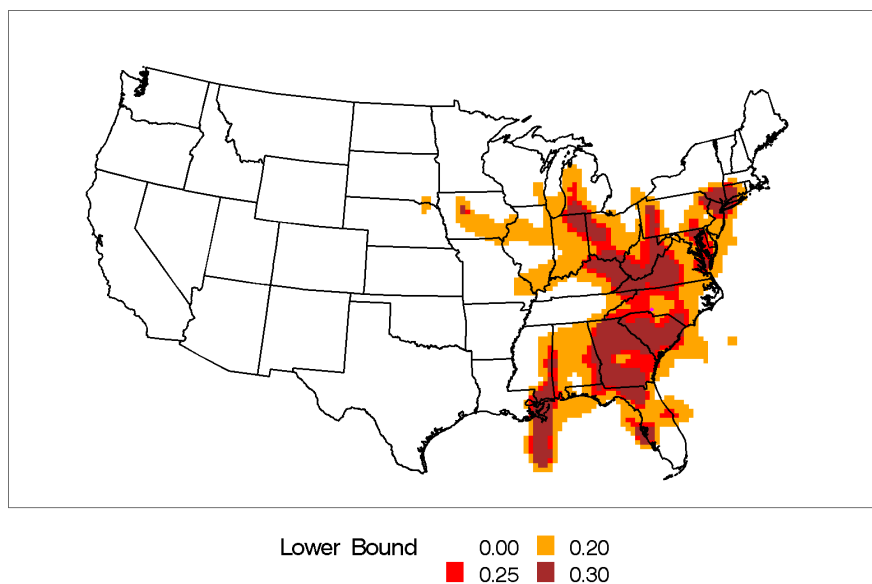


Figure G-9 Source Contribution Contour Plot for Charlotte, North Carolina, Source 2 - Coal Combustion.

Charlotte, NC, Source 2
Incremental Probability for High Source Strength

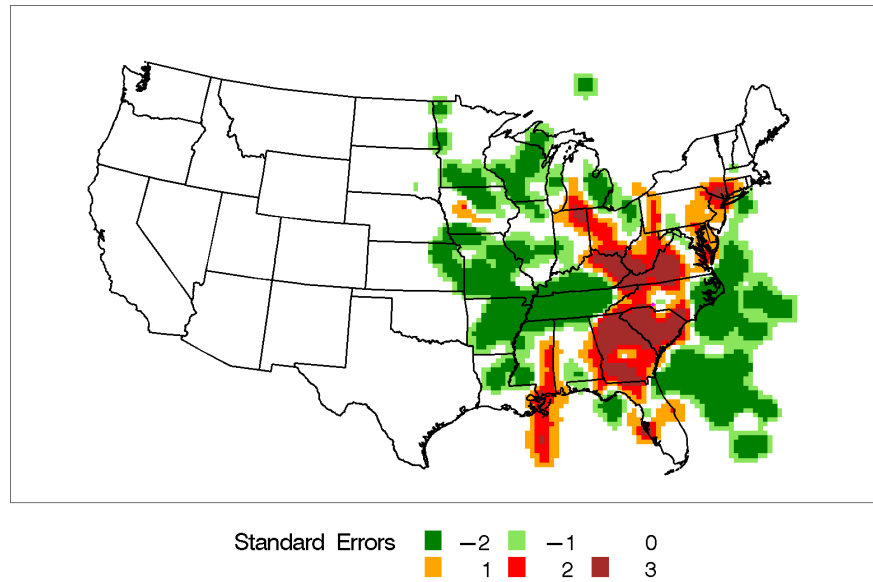


Figure G-10 Incremental Probability Contour Plot for Charlotte, North Carolina, Source 2 - Coal Combustion.

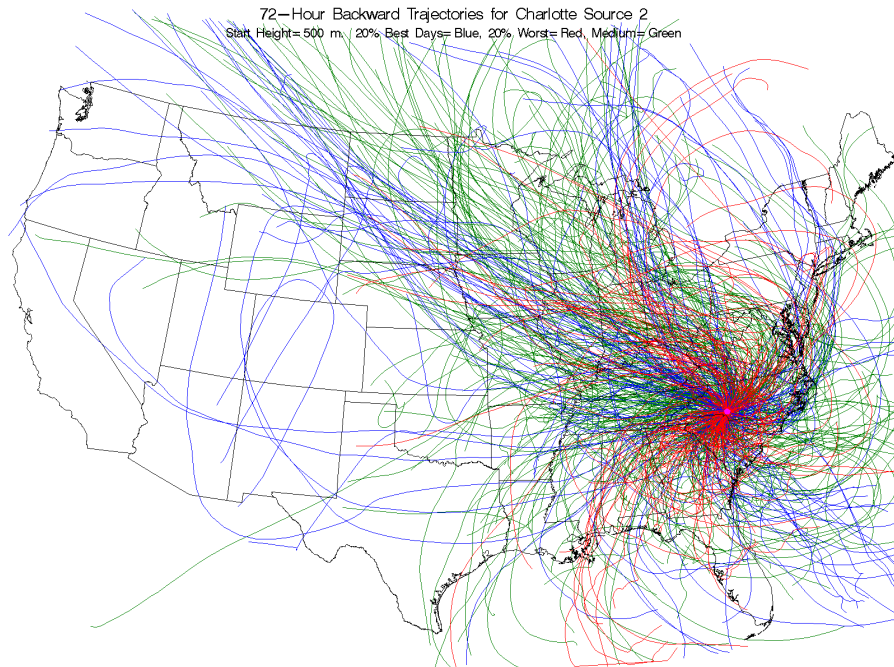
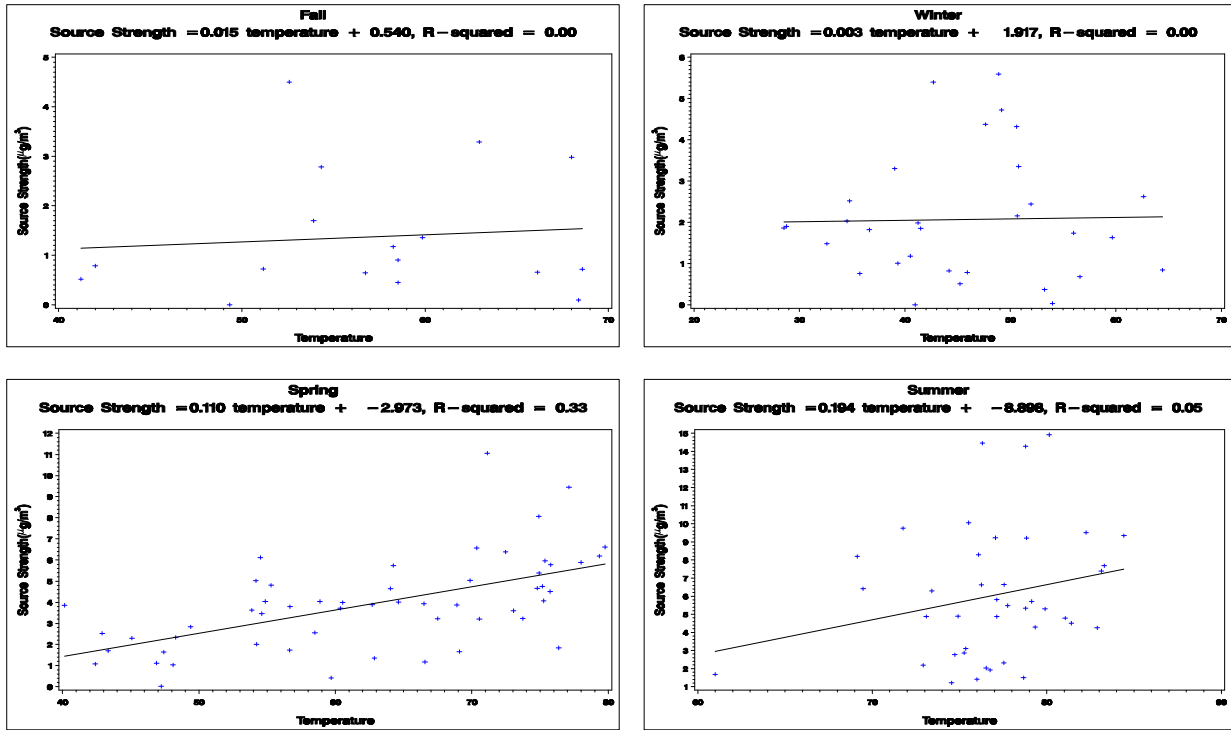


Figure G-11 Back Trajectories Color Coded by Source Strength Category for Charlotte, North Carolina, Source 2 - Coal Combustion.

**Source Strength Versus Mean Daily Temperature
At Charlotte, NC for Source 2**



**Source Strength Versus Mean Daily Pressure
At Charlotte, NC for Source 2**

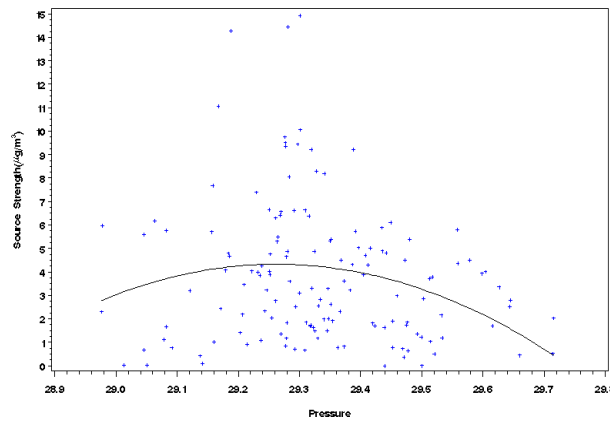


Figure G-12 Scatter Plot of Source Strength Versus Mean Daily Temperature (Rows 1 and 2) and Pressure (bottom) for Charlotte, North Carolina, Source 2 - Coal Combustion.

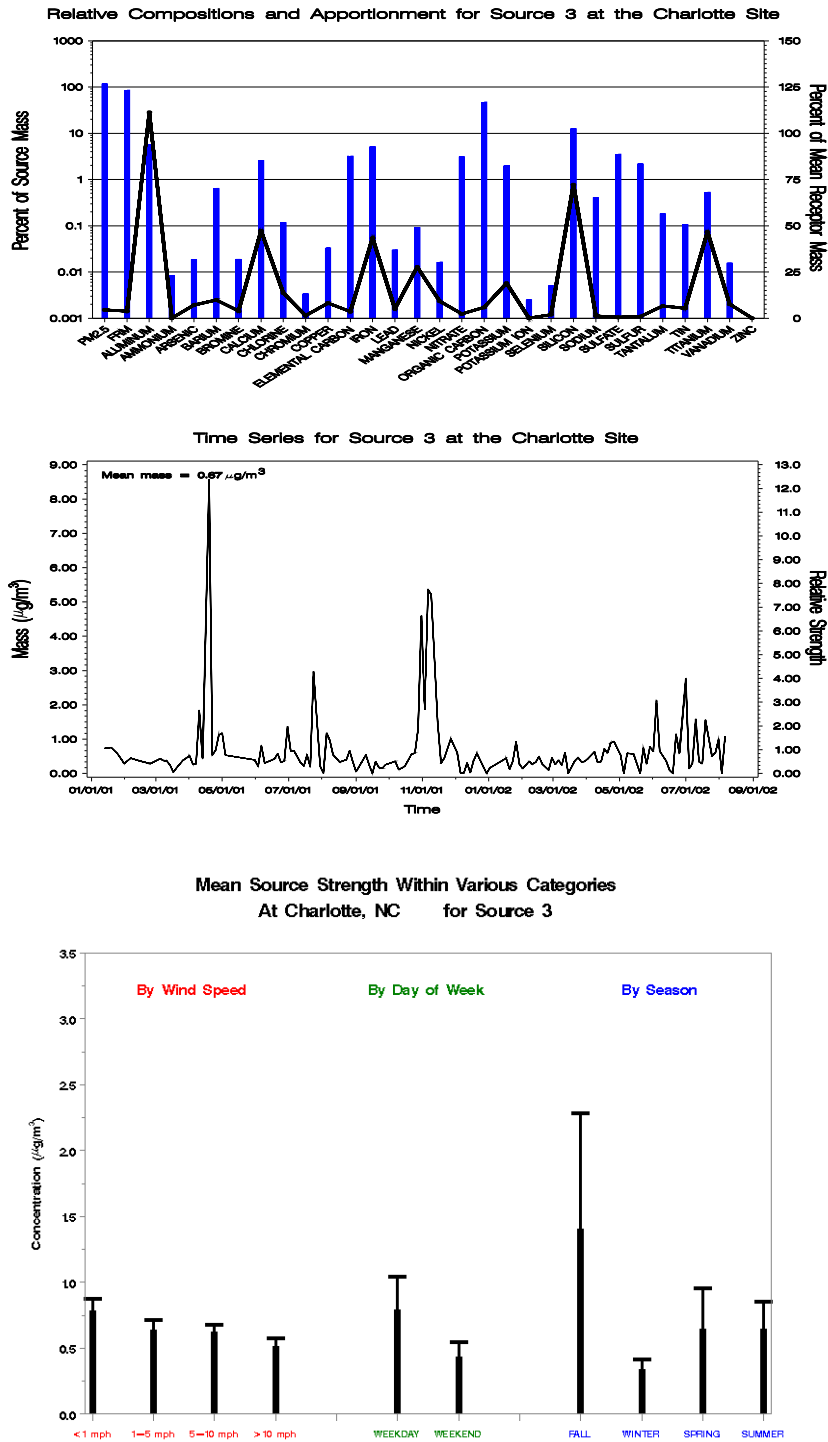


Figure G-13 Profile Plot (Top), Time Series Plot (Middle), and Bar Charts of the Source Strength Averaged by Wind Speed, Day of Week, and Season (Bottom) for Charlotte, North Carolina, Source 3 - Crustal.

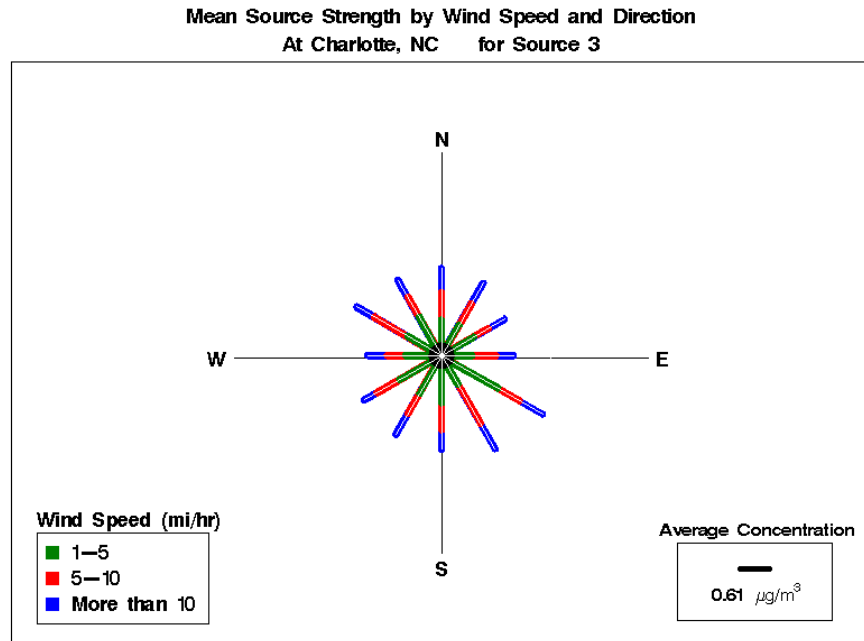


Figure D-14 Pollution Rose for Charlotte, North Carolina, Source 3 - Crustal.

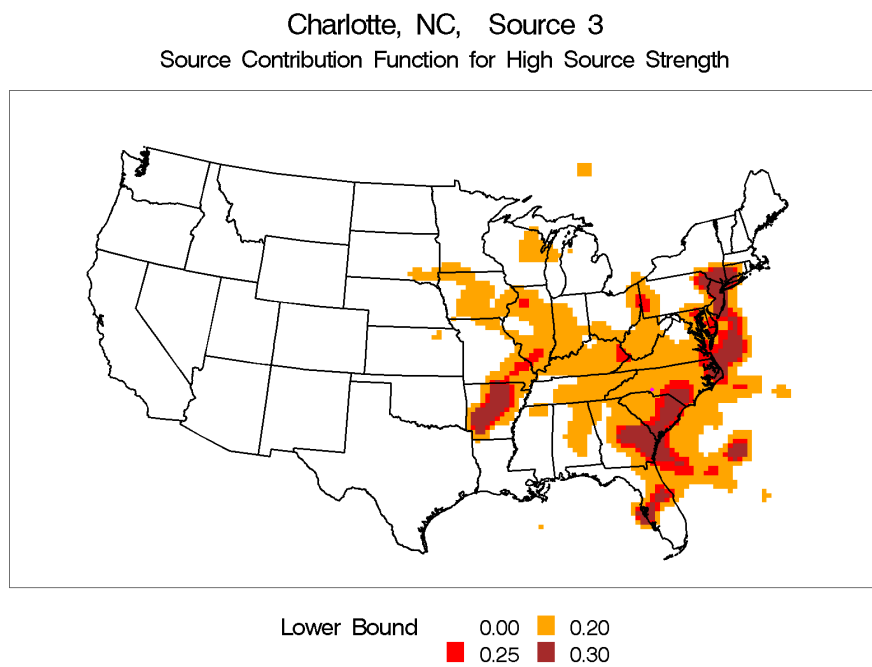


Figure D-15 Source Contribution Contour Plot for Charlotte, North Carolina, Source 3 - Crustal.

Charlotte, NC, Source 3
Incremental Probability for High Source Strength

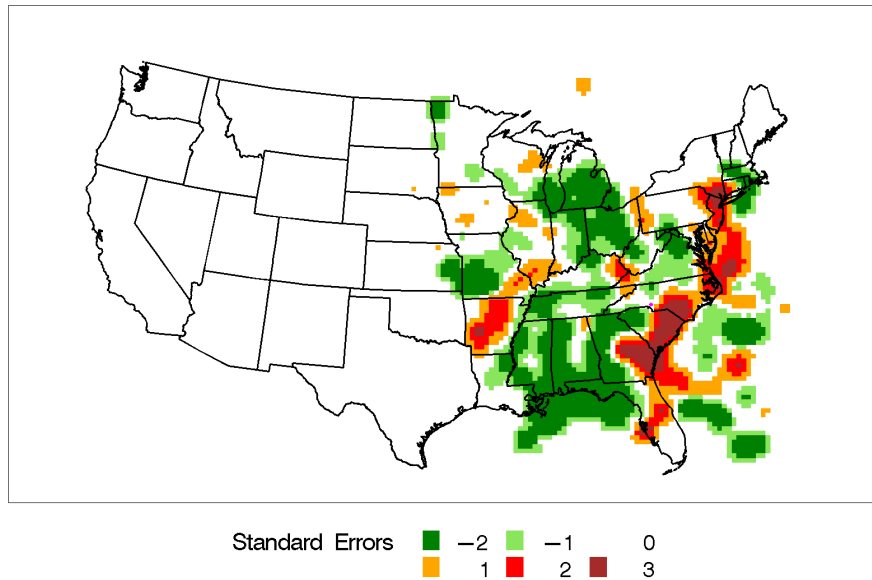


Figure D-16 Incremental Probability Contour Plot for Charlotte, North Carolina, Source 3 - Crustal.

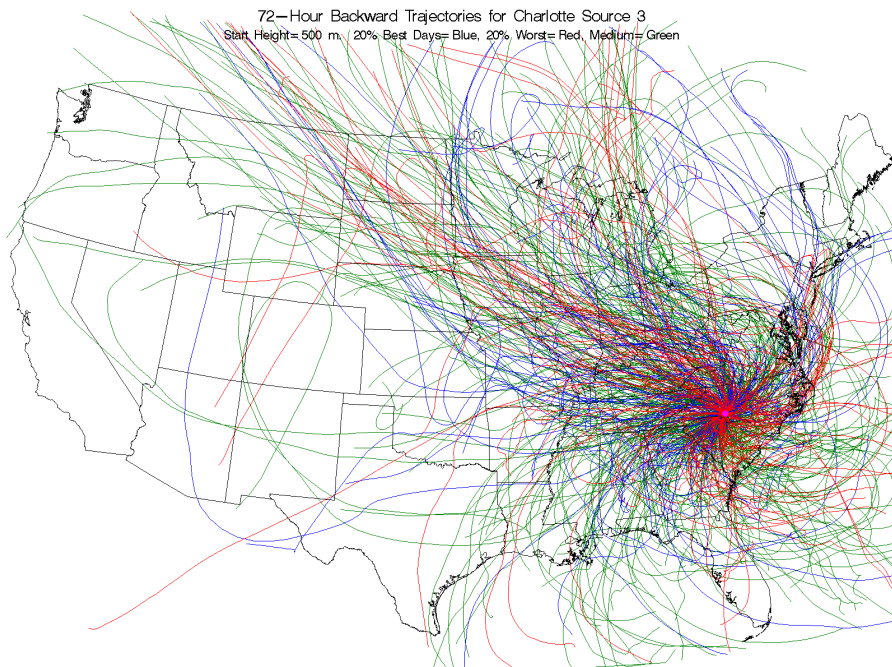
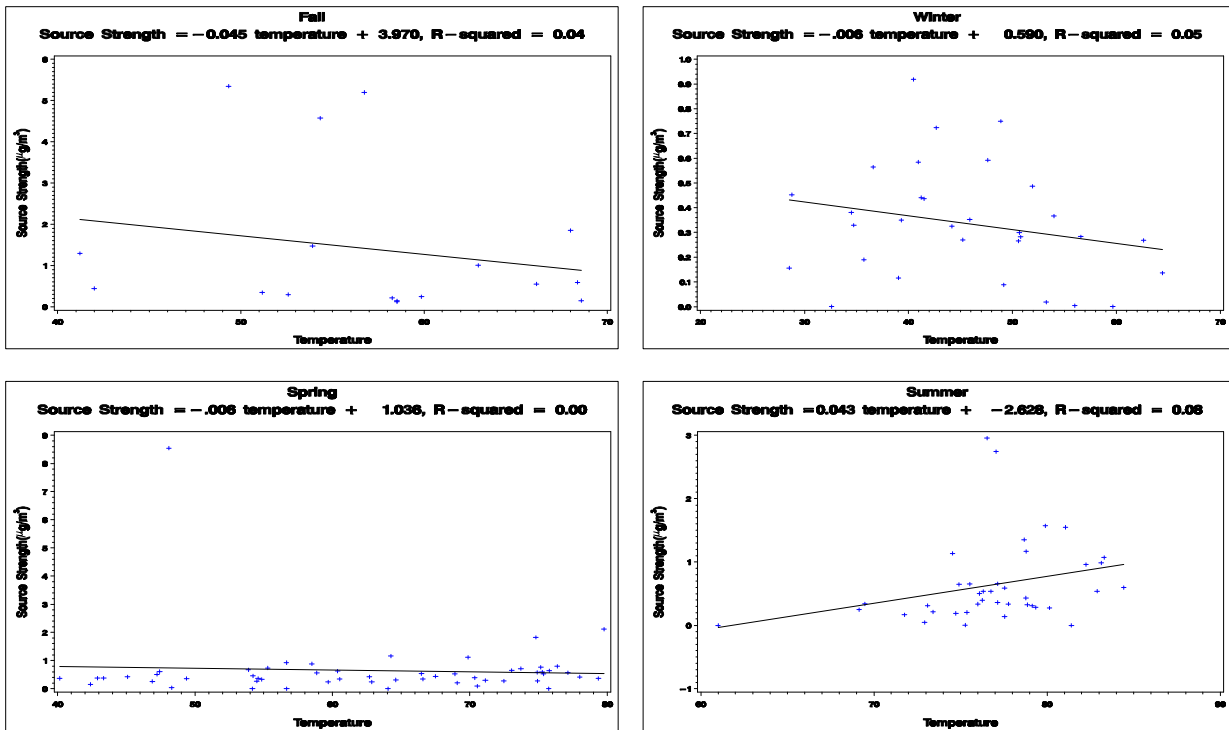


Figure D-17 Back Trajectories Color Coded by Source Strength Category for Charlotte, North Carolina, Source 3 - Crustal.

**Source Strength Versus Mean Daily Temperature
At Charlotte, NC for Source 3**



**Source Strength Versus Mean Daily Pressure
At Charlotte, NC for Source 3**

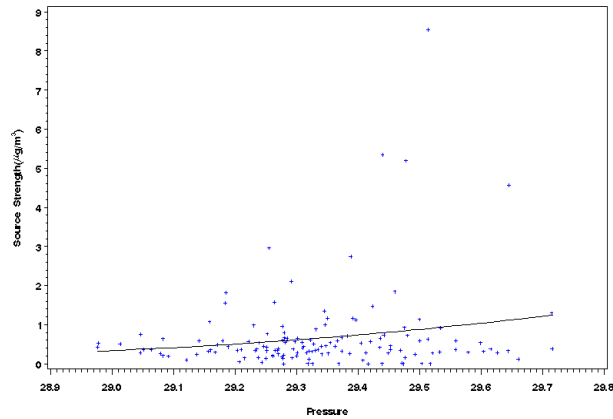


Figure D-18 Scatter Plot of Source Strength Versus Mean Daily Temperature (Rows 1 and 2) and Pressure (bottom) for Charlotte, North Carolina, Source 3 - Crustal.

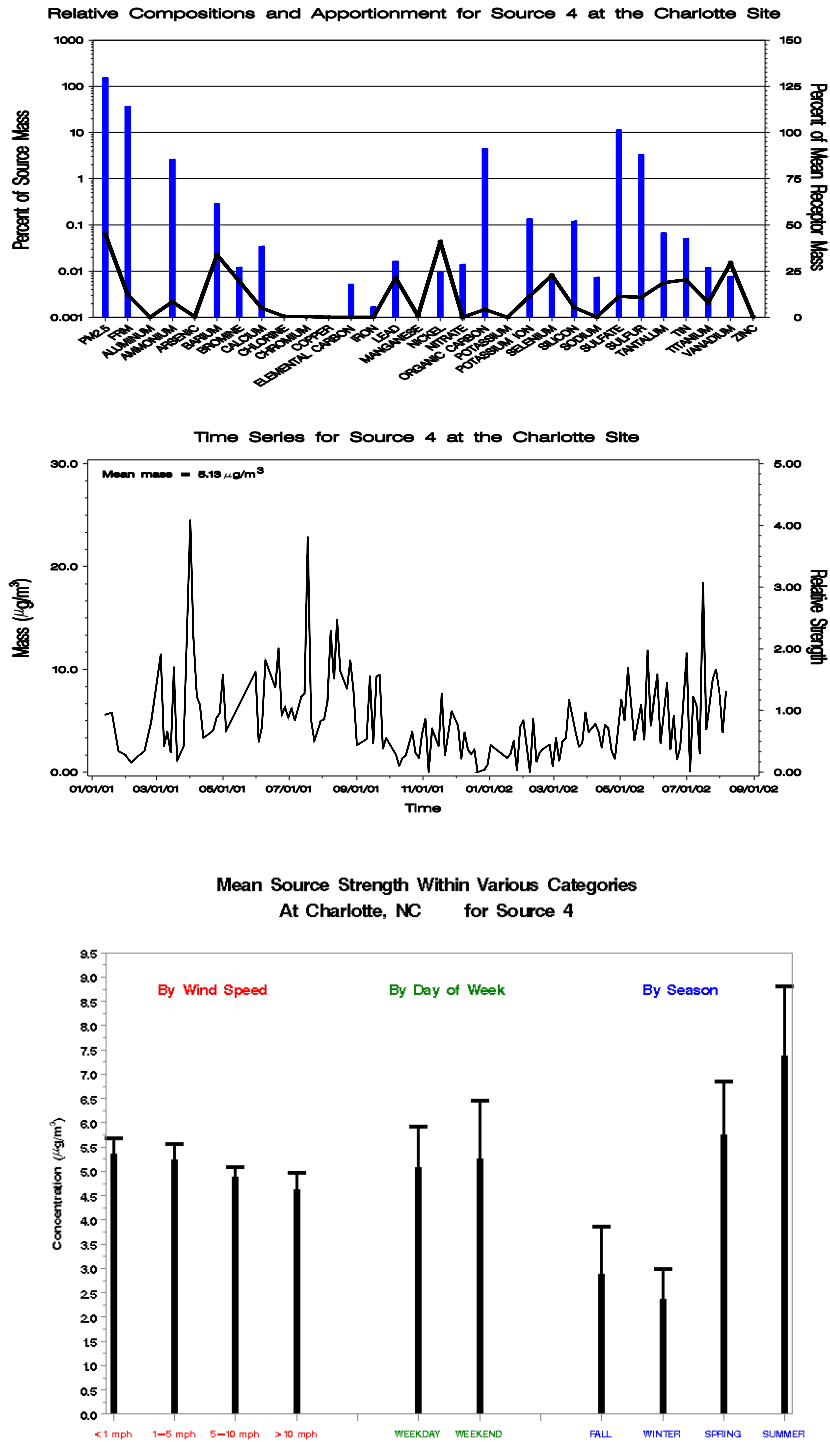


Figure D-19 Profile Plot (Top), Time Series Plot (Middle), and Bar Charts of the Source Strength Averaged by Wind Speed, Day of Week, and Season (Bottom) for Charlotte, North Carolina, Source 4 - Oil Combustion.

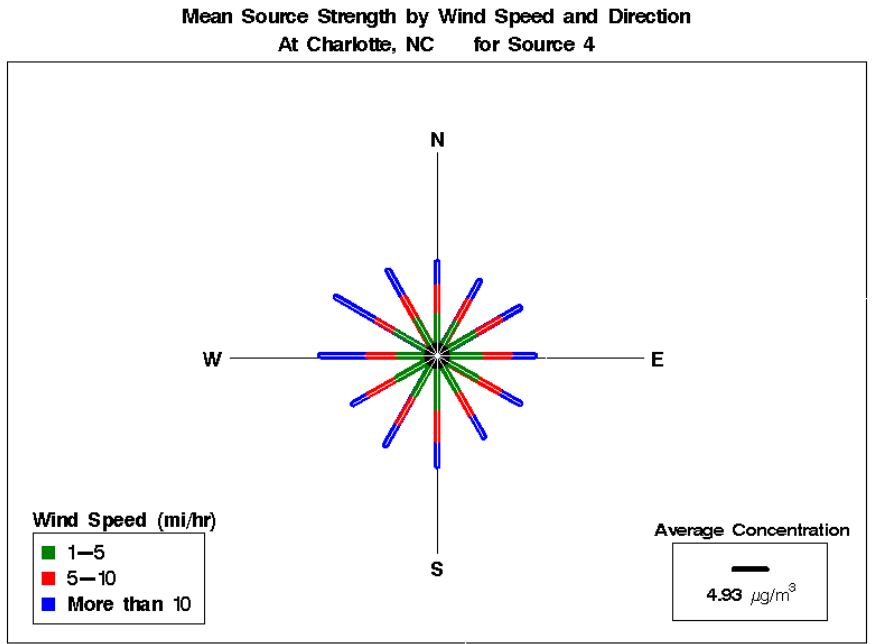


Figure D-20 Pollution Rose for Charlotte, North Carolina, Source 4 - Oil Combustion.

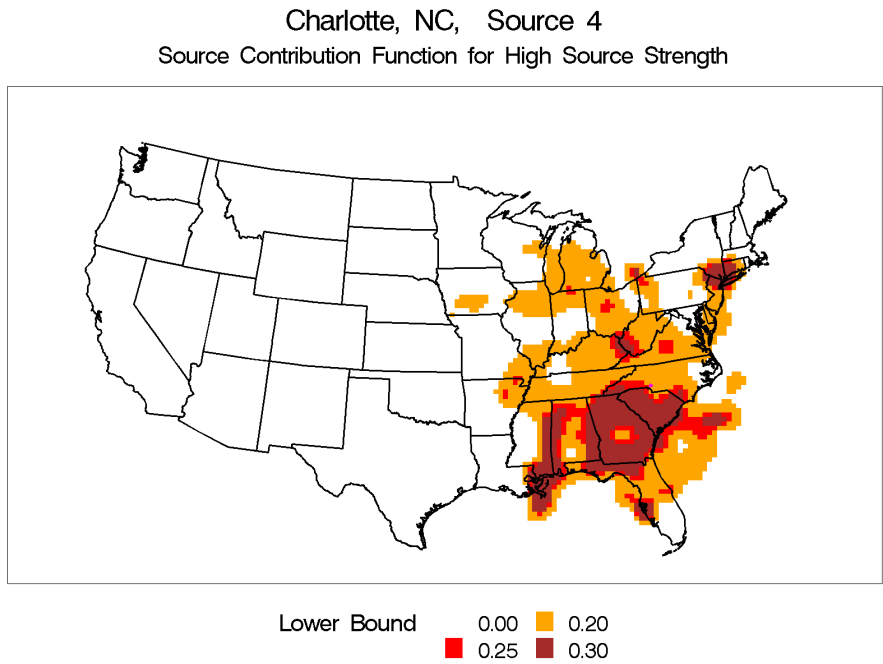


Figure D-21 Source Contribution Contour Plot for Charlotte, North Carolina, Source 4 - Oil Combustion.

Charlotte, NC, Source 4
 Incremental Probability for High Source Strength

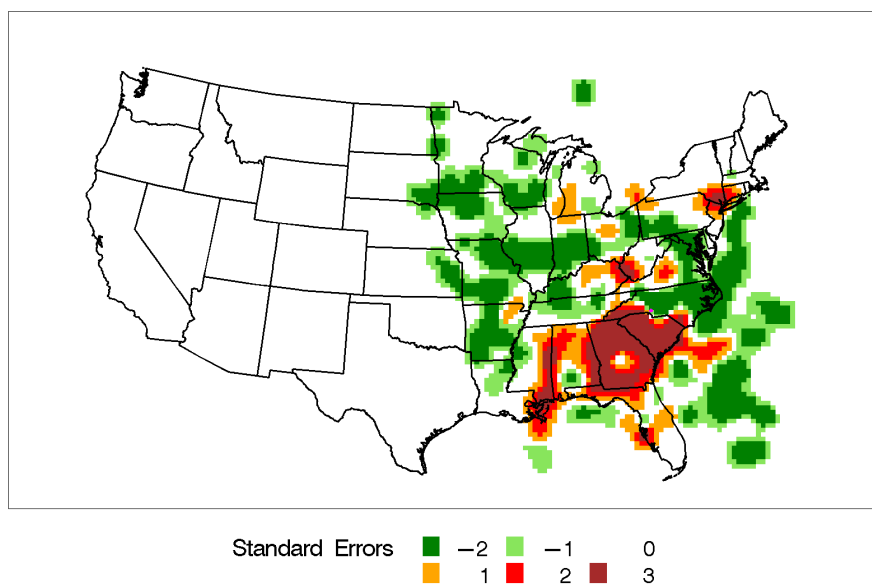


Figure D-22 Incremental Probability Contour Plot for Charlotte, North Carolina, Source 4 - Oil Combustion.

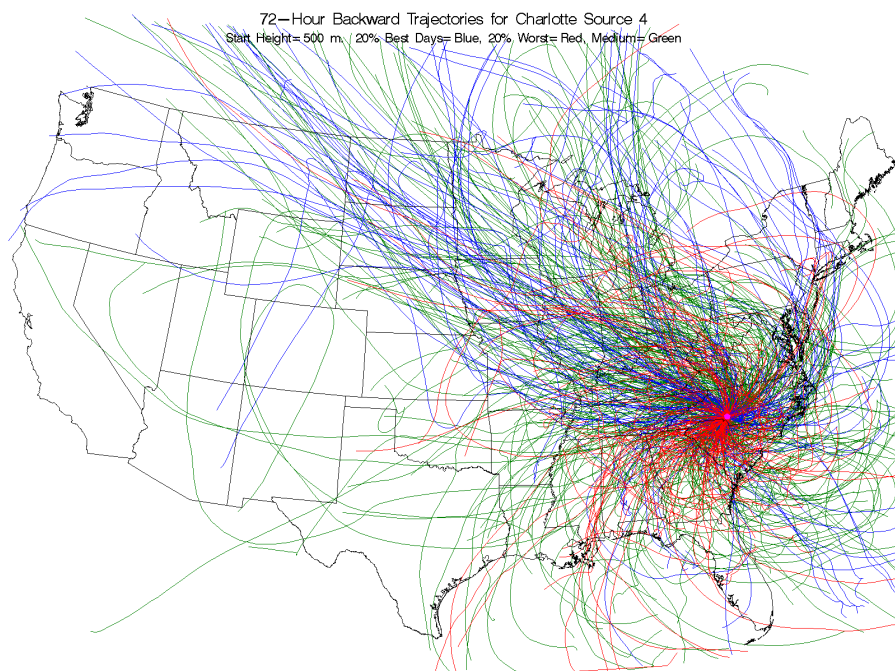
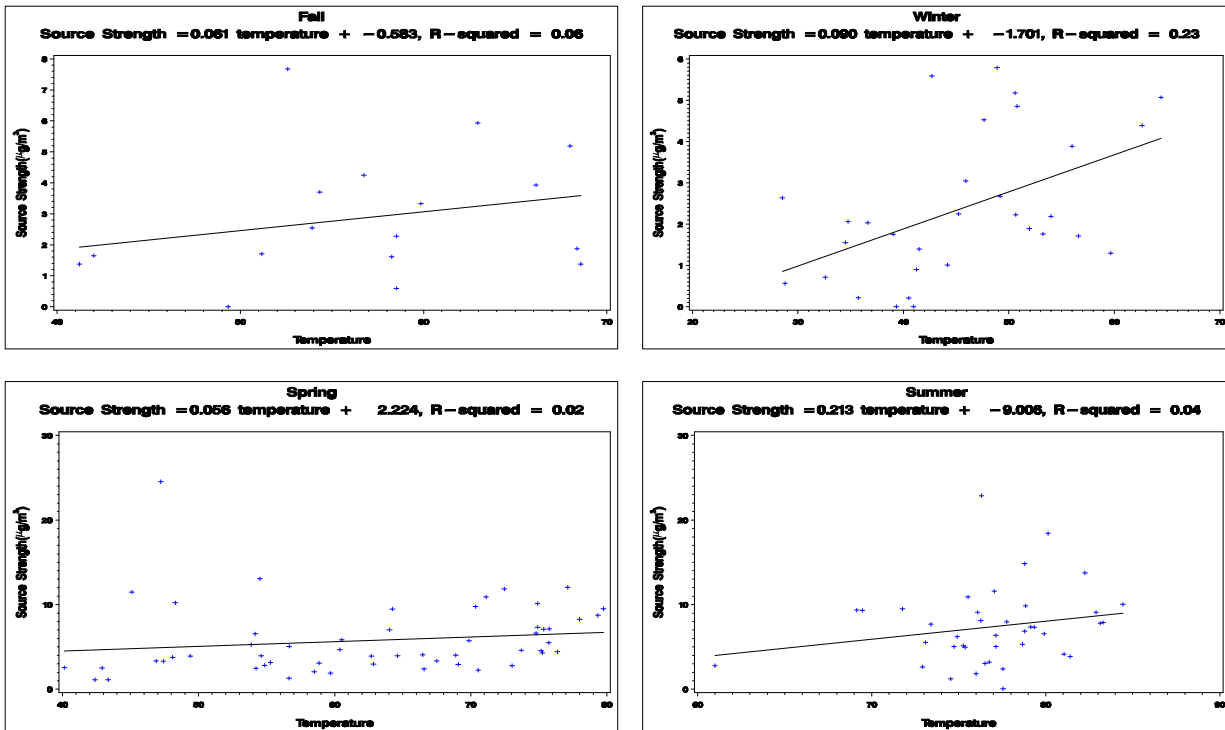


Figure D-23 Back Trajectories Color Coded by Source Strength Category for Charlotte, North Carolina, Source 4 - Oil Combustion.

**Source Strength Versus Mean Daily Temperature
At Charlotte, NC for Source 4**



**Source Strength Versus Mean Daily Pressure
At Charlotte, NC for Source 4**

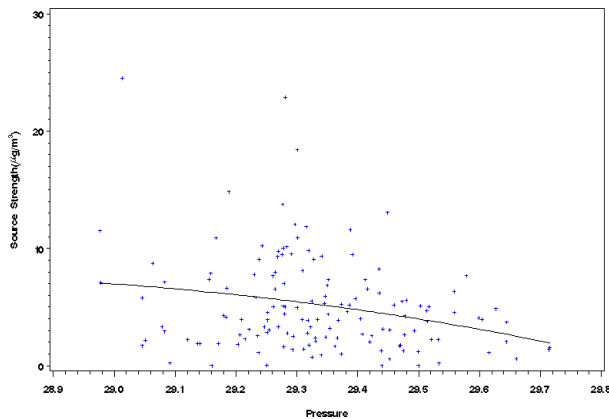


Figure D-24 Scatter Plot of Source Strength Versus Mean Daily Temperature (Rows 1 and 2) and Pressure (bottom) for Charlotte, North Carolina, Source 4 - Oil Combustion.

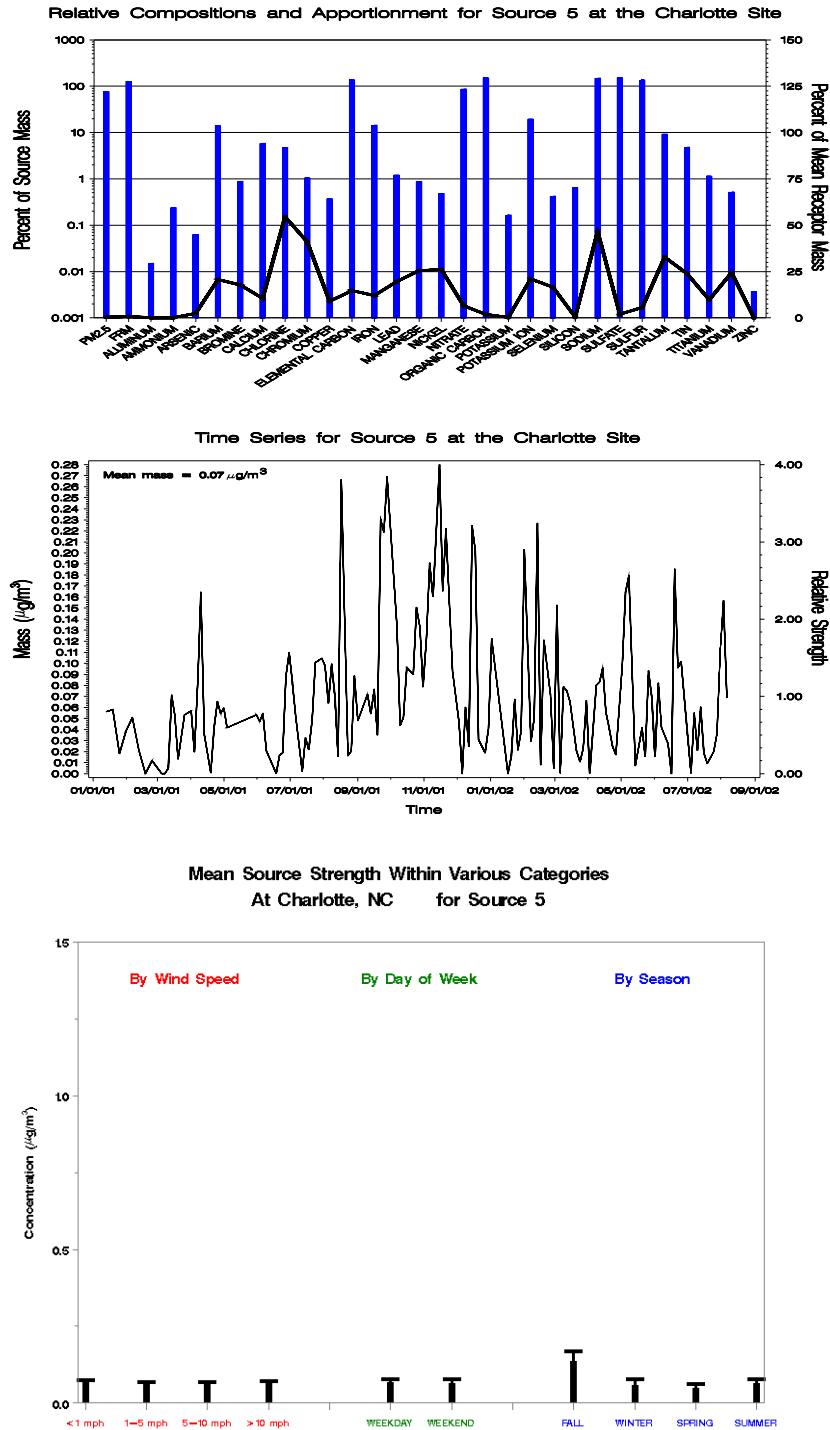


Figure D-25 Profile Plot (Top), Time Series Plot (Middle), and Bar Charts of the Source Strength Averaged by Wind Speed, Day of Week, and Season (Bottom) for Charlotte, North Carolina, Source 5 - Marine and Industrial Salts.

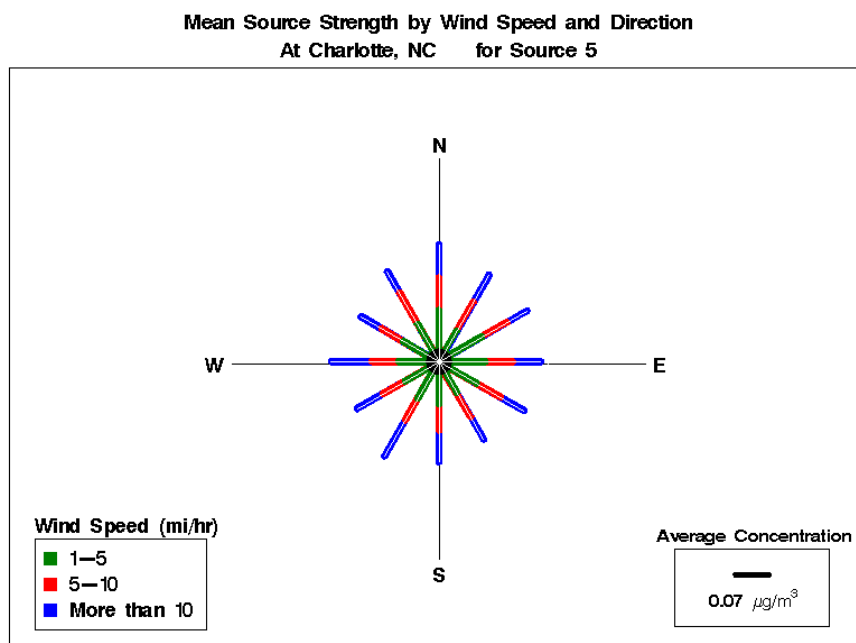


Figure D-26 Pollution Rose for Charlotte, North Carolina, Source 5 - Marine and Industrial Salts.

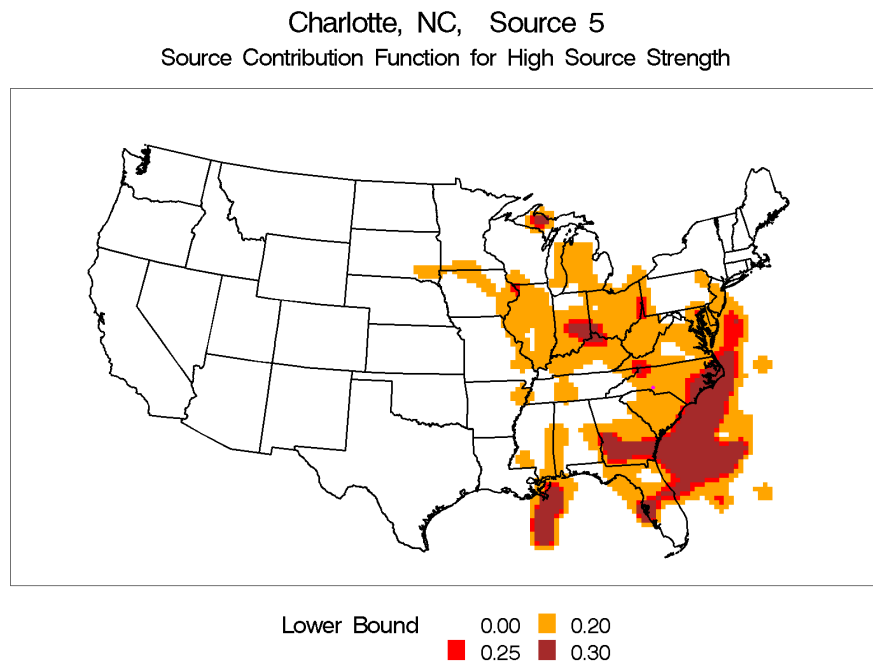


Figure D-27 Source Contribution Contour Plot for Charlotte, North Carolina, Source 5 - Marine and Industrial Salts.

Charlotte, NC, Source 5
Incremental Probability for High Source Strength

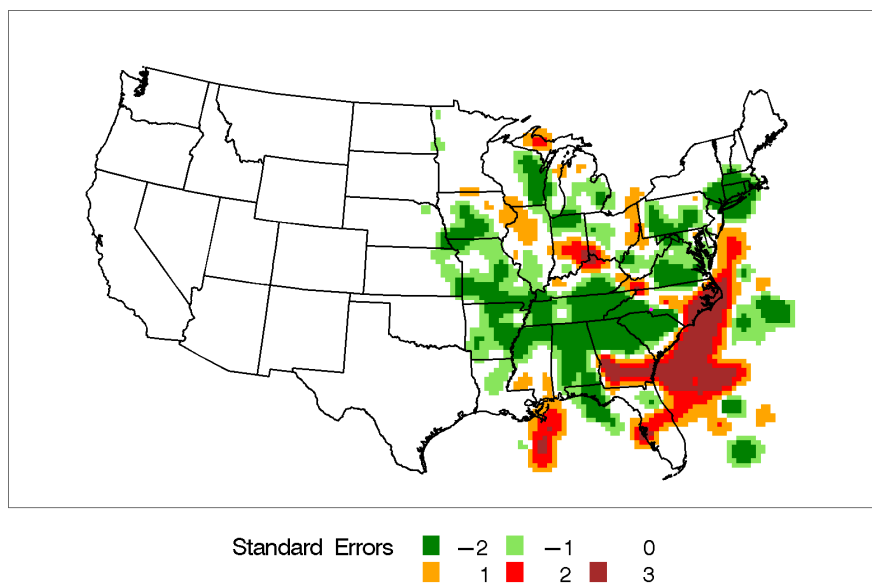


Figure D-28 Incremental Probability Contour Plot for Charlotte, North Carolina, Source 5 - Marine and Industrial Salts.

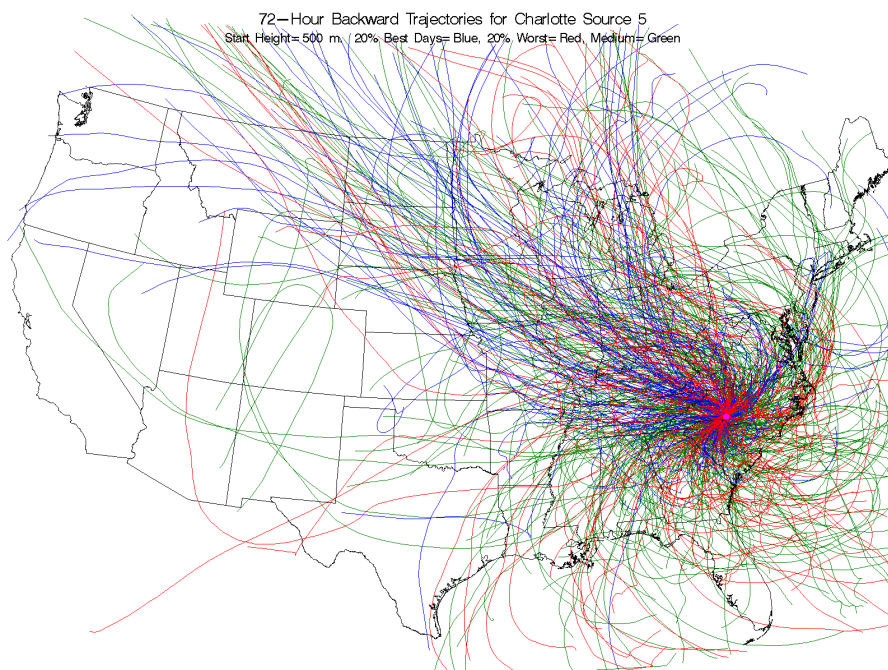
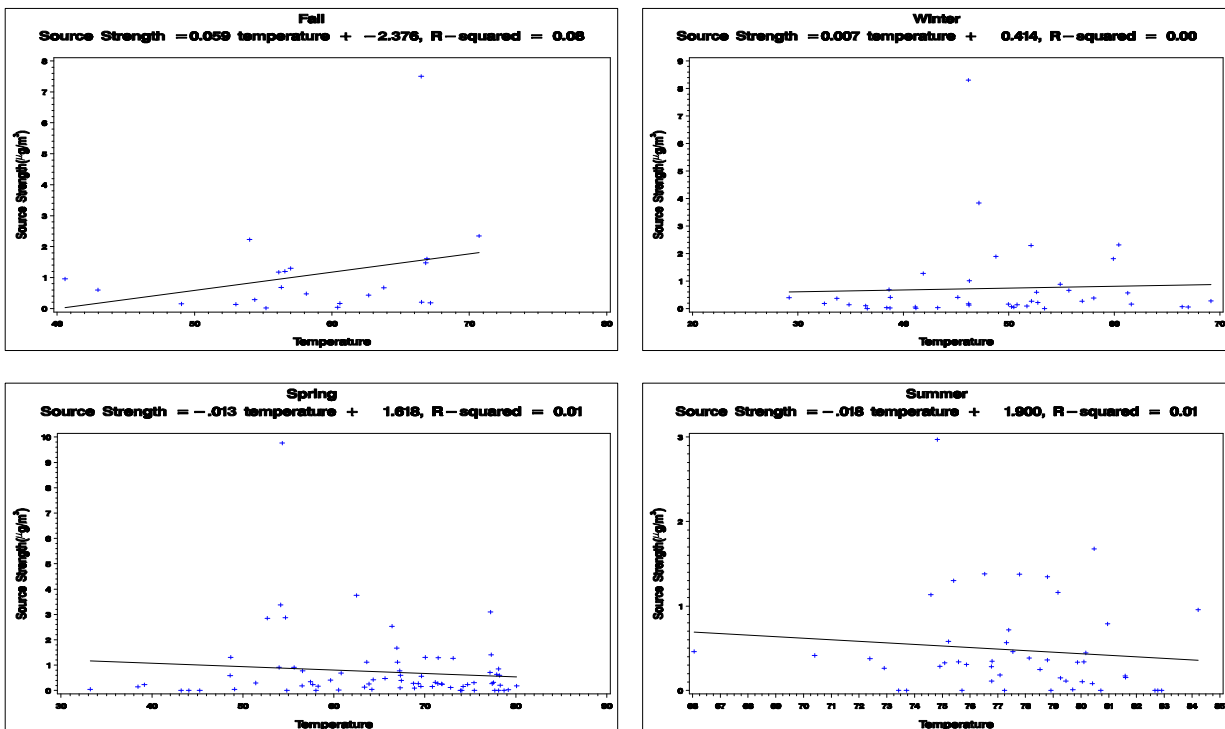


Figure D-29 Back Trajectories Color Coded by Source Strength Category for Charlotte, North Carolina, Source 5 - Marine and Industrial Salts.

**Source Strength Versus Mean Daily Temperature
At Birmingham, AL for Source 5**



**Source Strength Versus Mean Daily Pressure
At Charlotte, NC for Source 5**

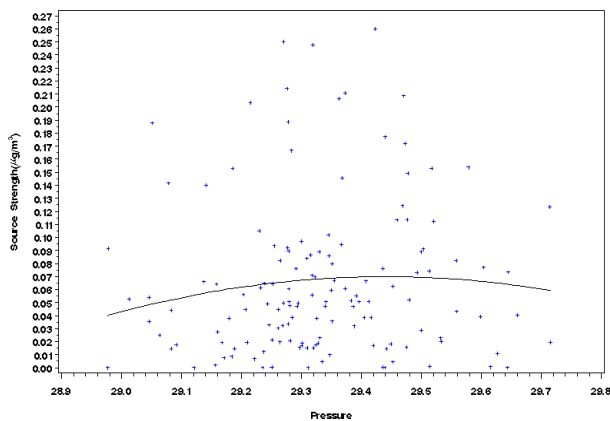


Figure D-30 Scatter Plot of Source Strength Versus Mean Daily Temperature (Rows 1 and 2) and Pressure (bottom) for Charlotte, North Carolina, Source 5 - Marine and Industrial Salts.

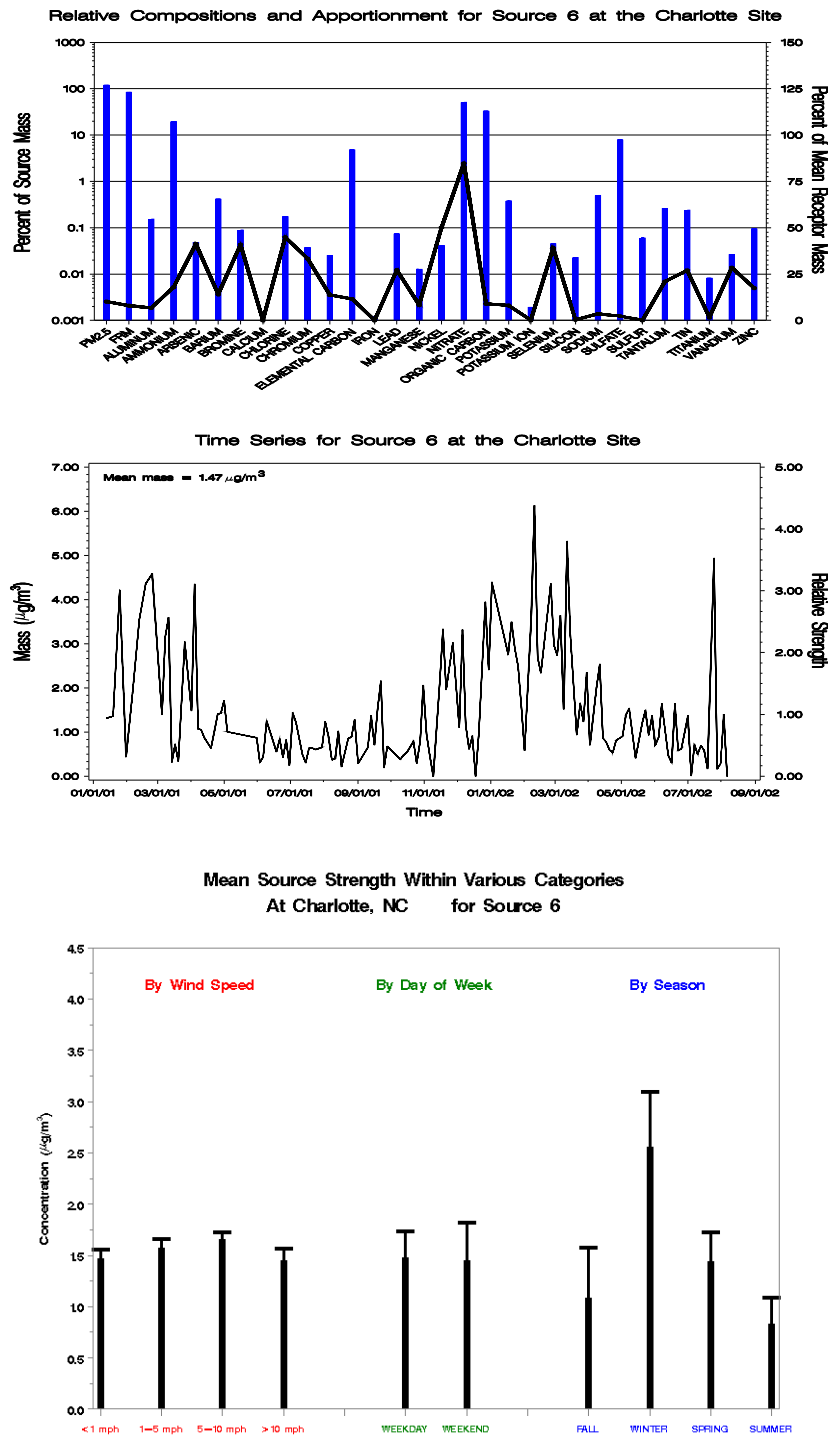


Figure D-31 Profile Plot (Top), Time Series Plot (Middle), and Bar Charts of the Source Strength Averaged by Wind Speed, Day of Week, and Season (Bottom) for Charlotte, North Carolina, Source 6 - Ammonium Nitrate.

Mean Source Strength by Wind Speed and Direction
At Charlotte, NC for Source 6

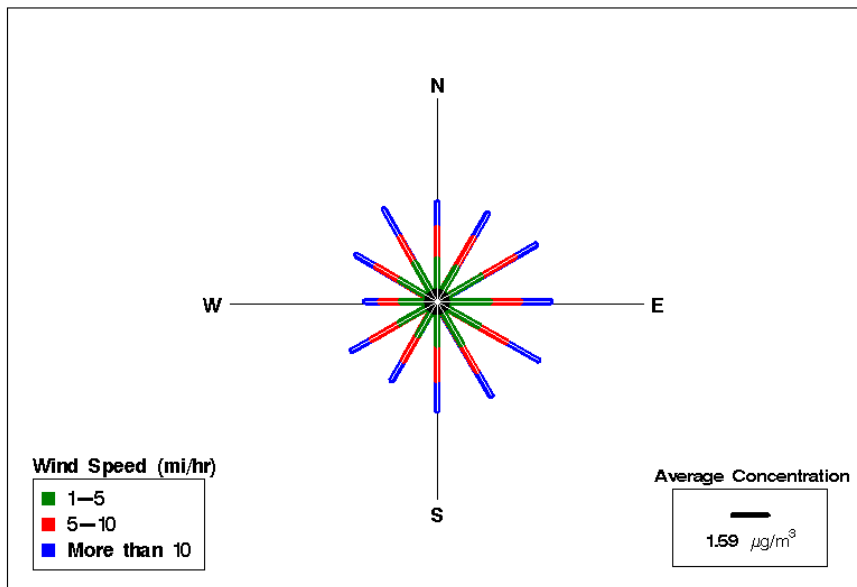


Figure D-32 Pollution Rose for Charlotte, North Carolina, Source 6 - Ammonium Nitrate.

Charlotte, NC, Source 6
Source Contribution Function for High Source Strength

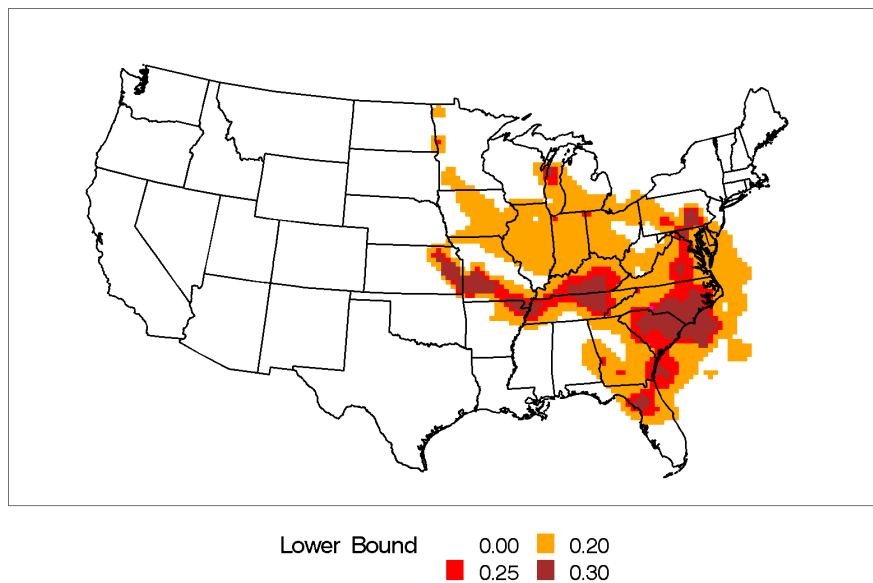


Figure D-33 Source Contribution Contour Plot for Charlotte, North Carolina, Source 6 - Ammonium Nitrate.

Charlotte, NC, Source 6
 Incremental Probability for High Source Strength

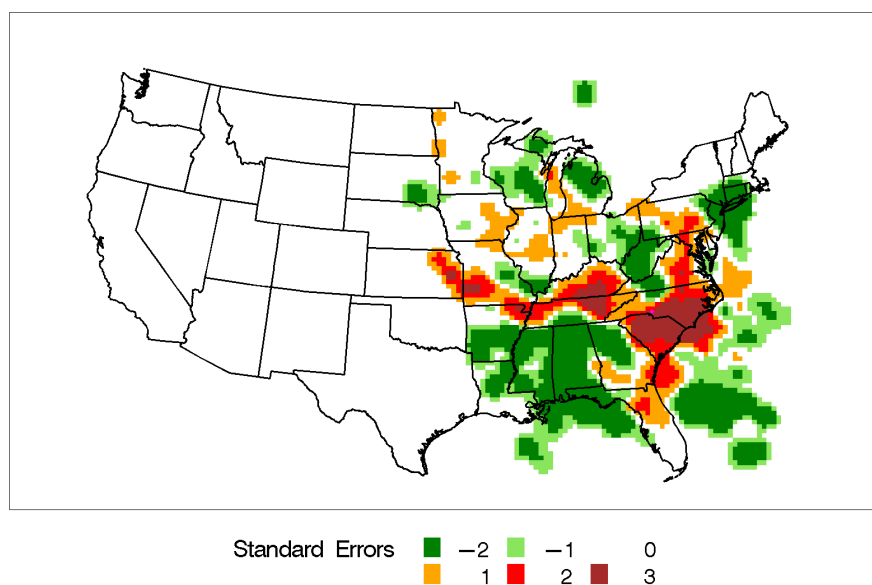


Figure D-34 Incremental Probability Contour Plot for Charlotte, North Carolina, Source 6 - Ammonium Nitrate.

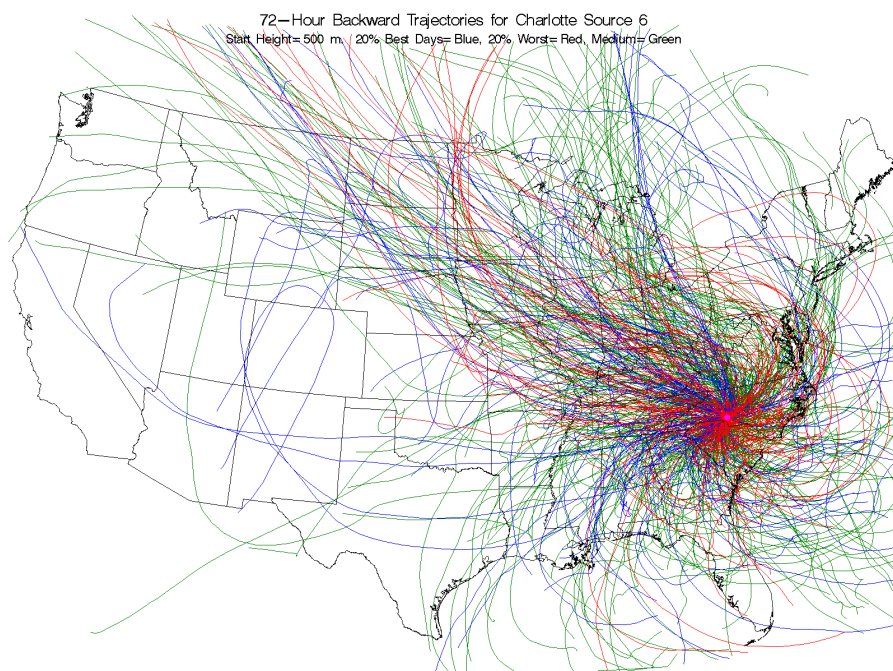
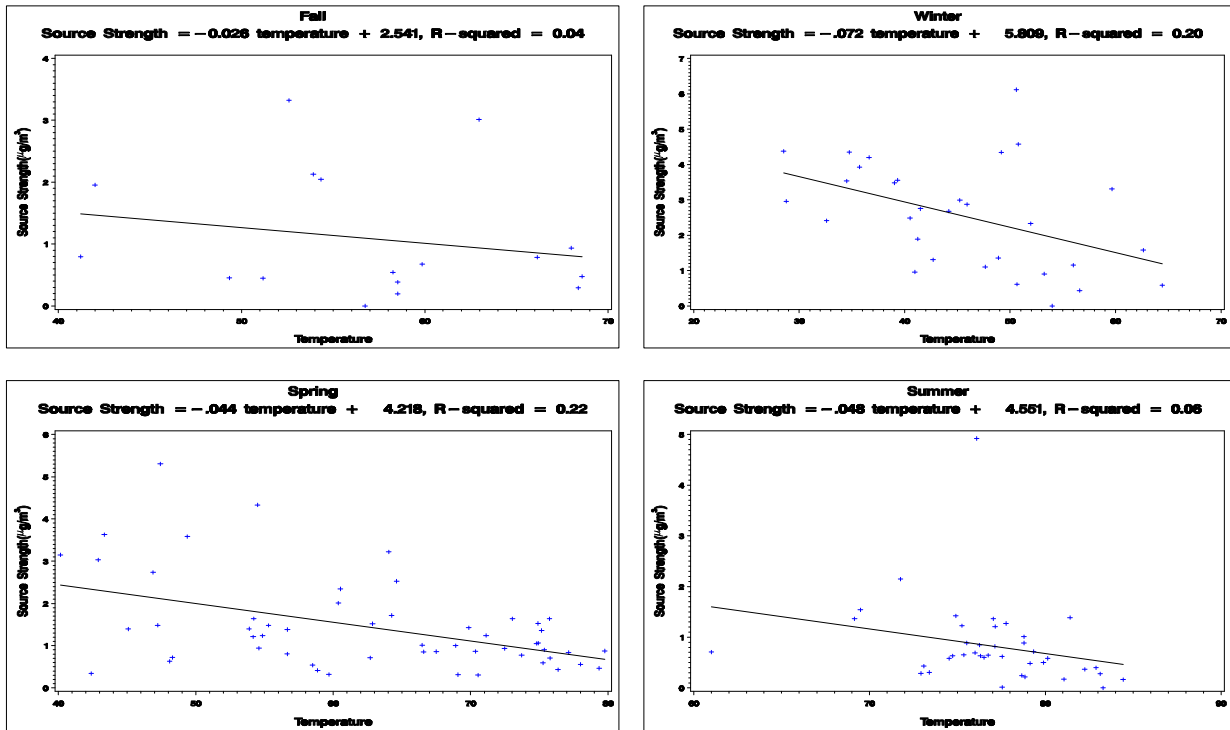


Figure D-35 Back Trajectories Color Coded by Source Strength Category for Charlotte, North Carolina, Source 6 - Ammonium Nitrate.

**Source Strength Versus Mean Daily Temperature
At Charlotte, NC for Source 6**



**Source Strength Versus Mean Daily Pressure
At Charlotte, NC for Source 6**

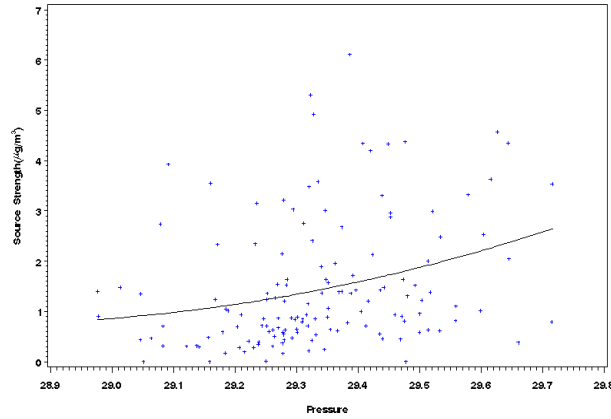


Figure D-36 Scatter Plot of Source Strength Versus Mean Daily Temperature (Rows 1 and 2) and Pressure (bottom) for Charlotte, North Carolina, Source 6 - Ammonium Nitrate.

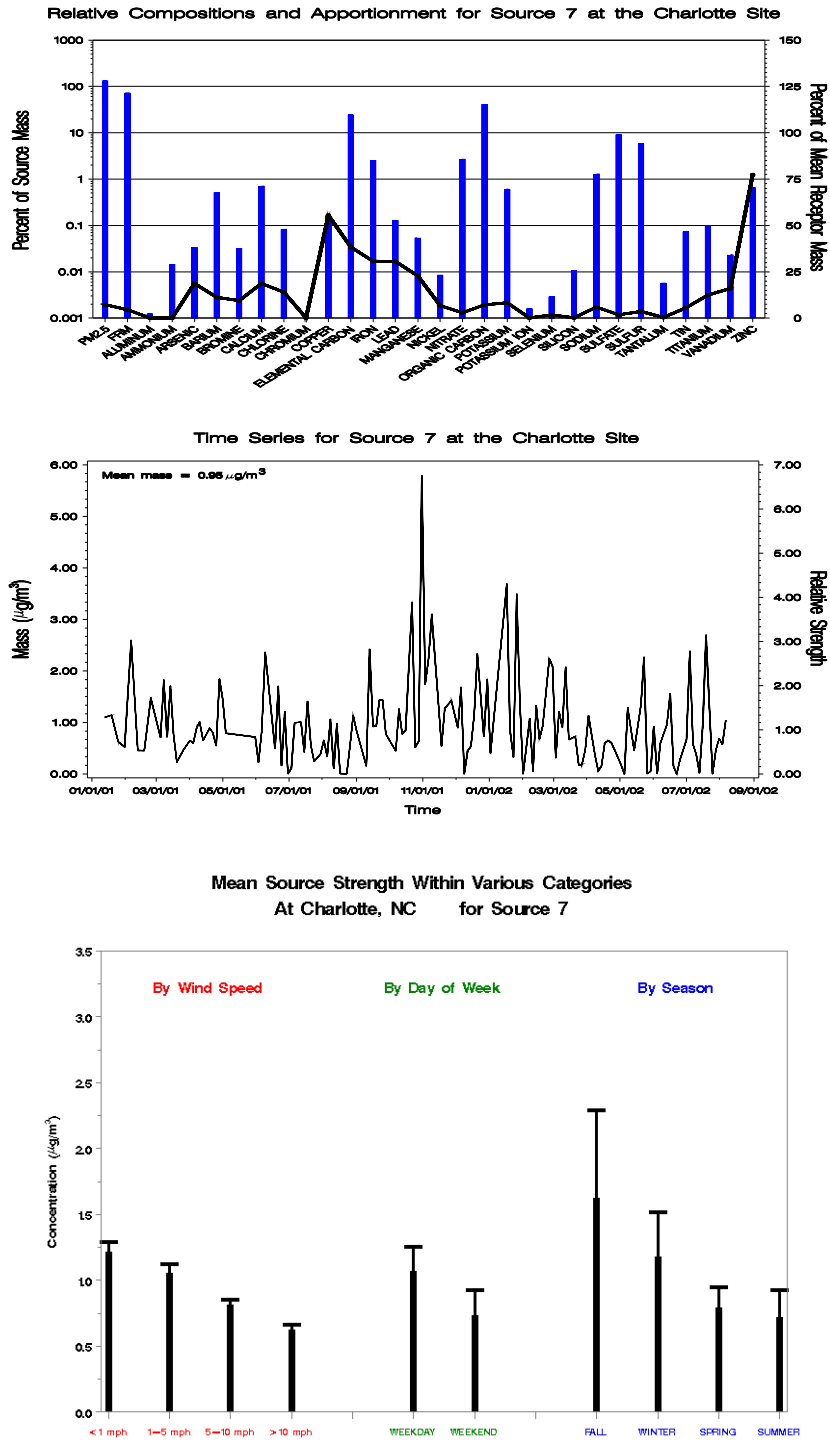


Figure D-37 Profile Plot (Top), Time Series Plot (Middle), and Bar Charts of the Source Strength Averaged by Wind Speed, Day of Week, and Season (Bottom) for Charlotte, North Carolina, Source 7 - Smelting.

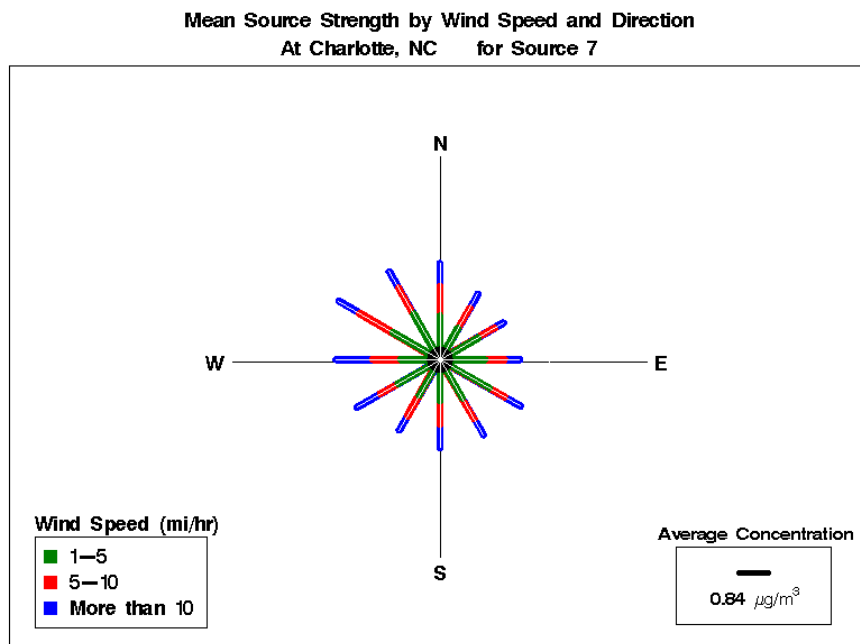


Figure D-38 Pollution Rose for Charlotte, North Carolina, Source 7 - Smelting.

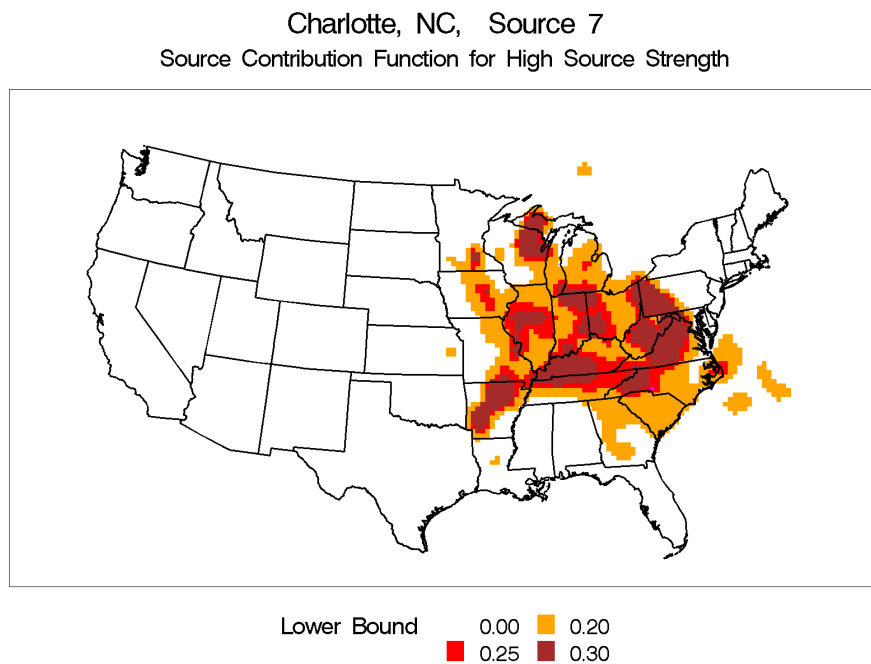


Figure D-39 Source Contribution Contour Plot for Charlotte, North Carolina, Source 7 - Smelting.

Charlotte, NC, Source 7
Incremental Probability for High Source Strength

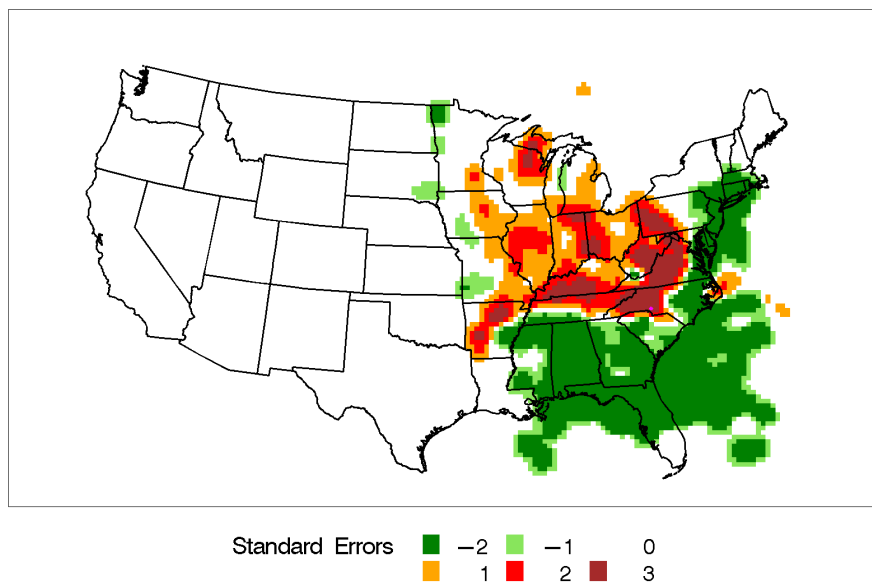


Figure D-40 Incremental Probability Contour Plot for Charlotte, North Carolina, Source 7 - Smelting.

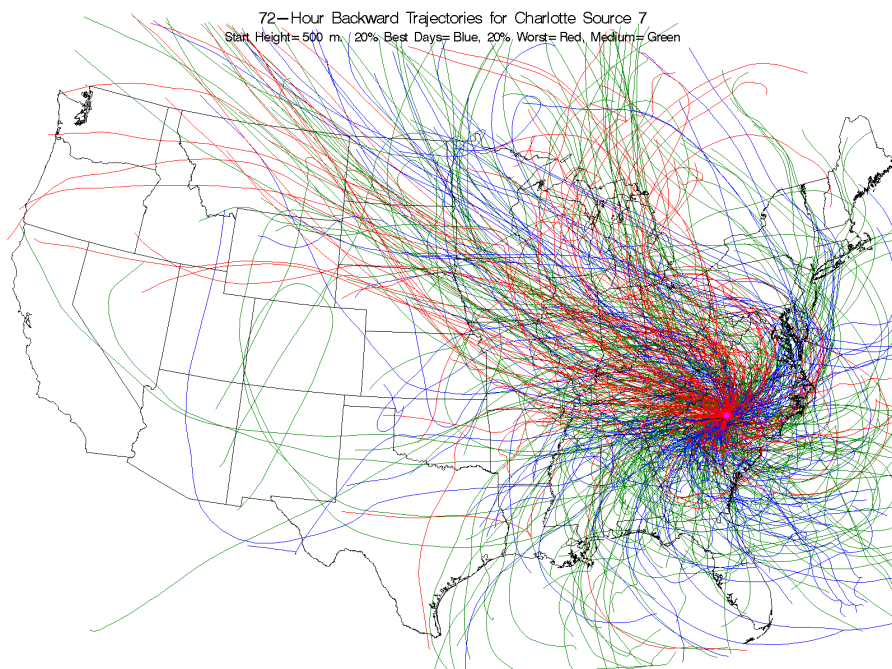
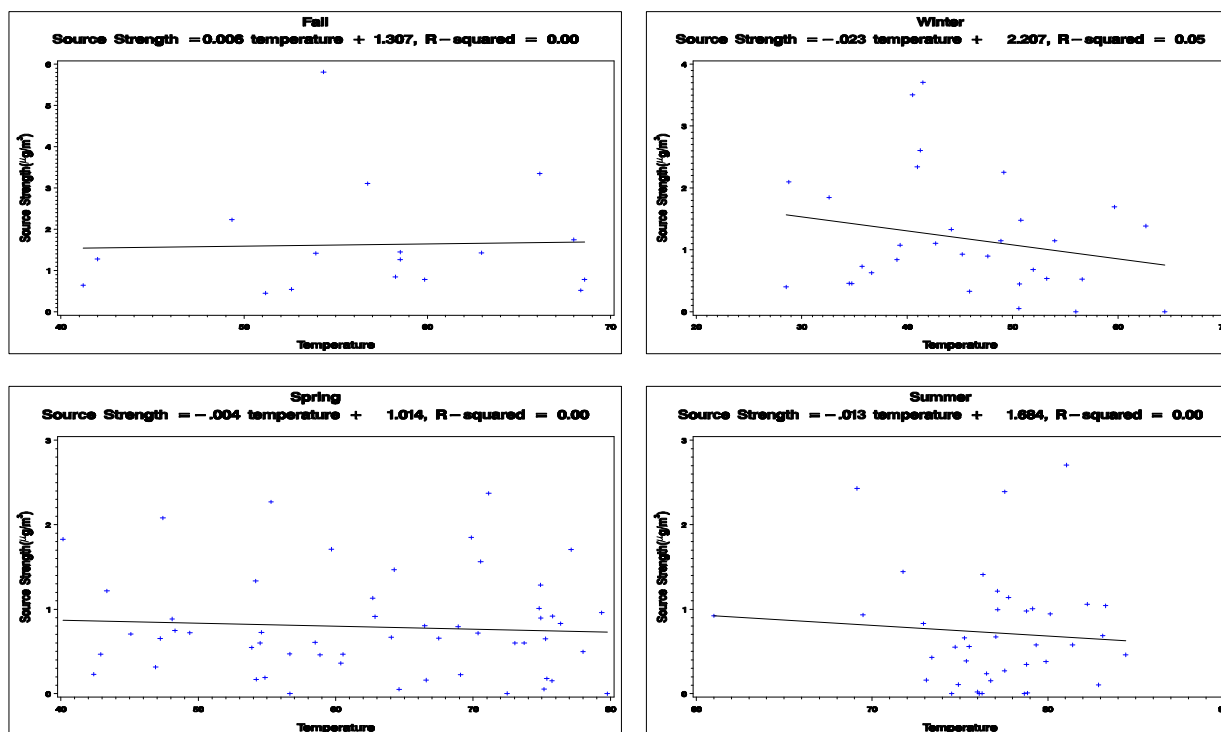


Figure D-41 Back Trajectories Color Coded by Source Strength Category for Charlotte, North Carolina, Source 7 - Smelting.

**Source Strength Versus Mean Daily Temperature
At Charlotte, NC for Source 7**



**Source Strength Versus Mean Daily Pressure
At Charlotte, NC for Source 7**

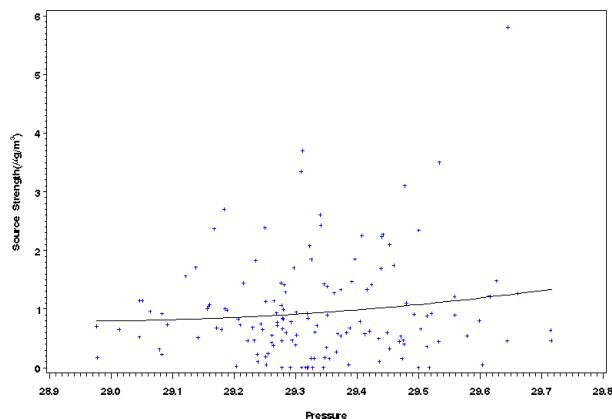


Figure D-42 Scatter Plot of Source Strength Versus Mean Daily Temperature (Rows 1 and 2) and Pressure (bottom) for Charlotte, North Carolina, Source 7 - Smelting.

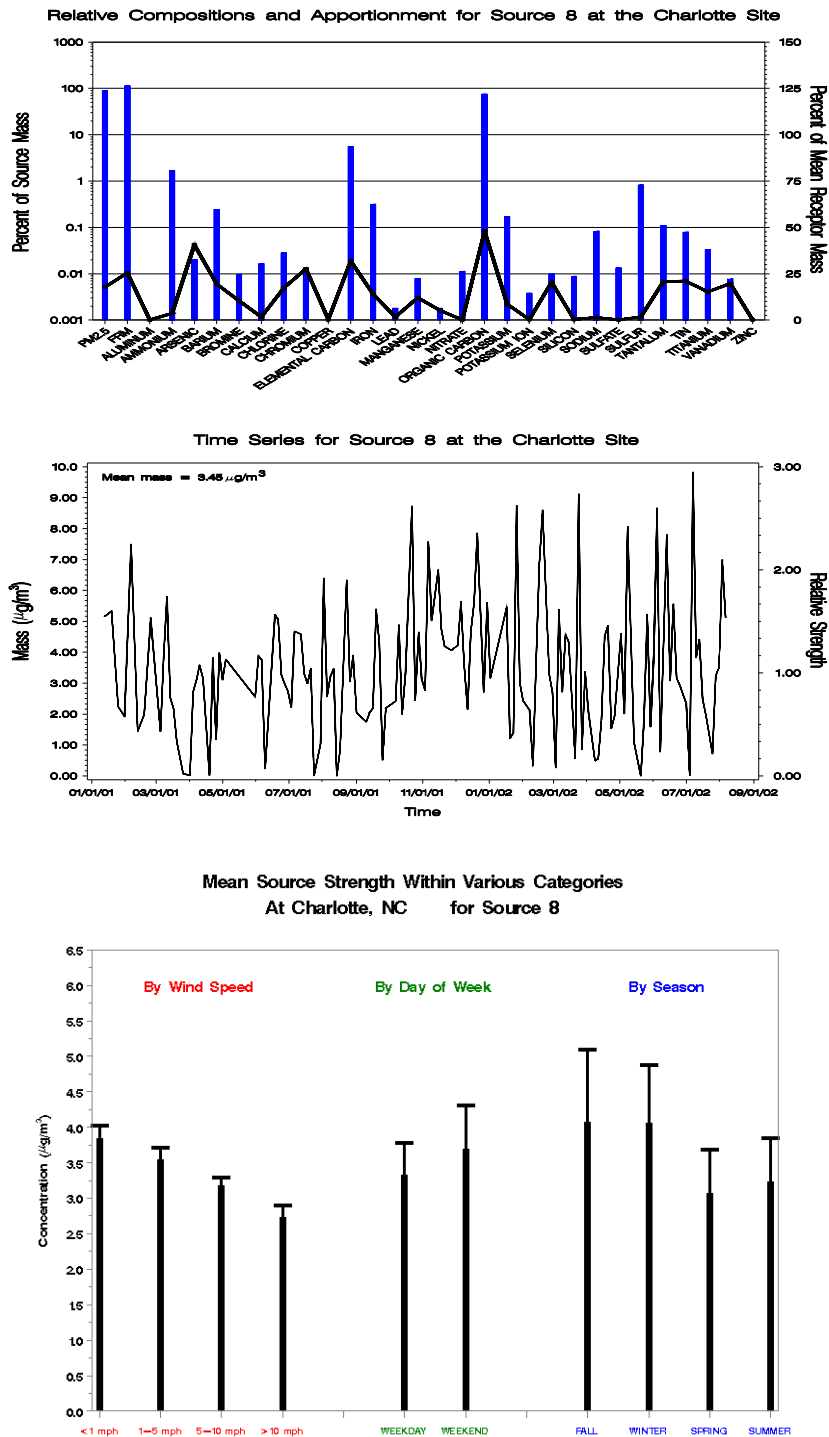


Figure D-43 Profile Plot (Top), Time Series Plot (Middle), and Bar Charts of the Source Strength Averaged by Wind Speed, Day of Week, and Season (Bottom) for Charlotte, North Carolina, Source 8 - Mobile Sources.

Charlotte, NC, Source 8
Incremental Probability for High Source Strength

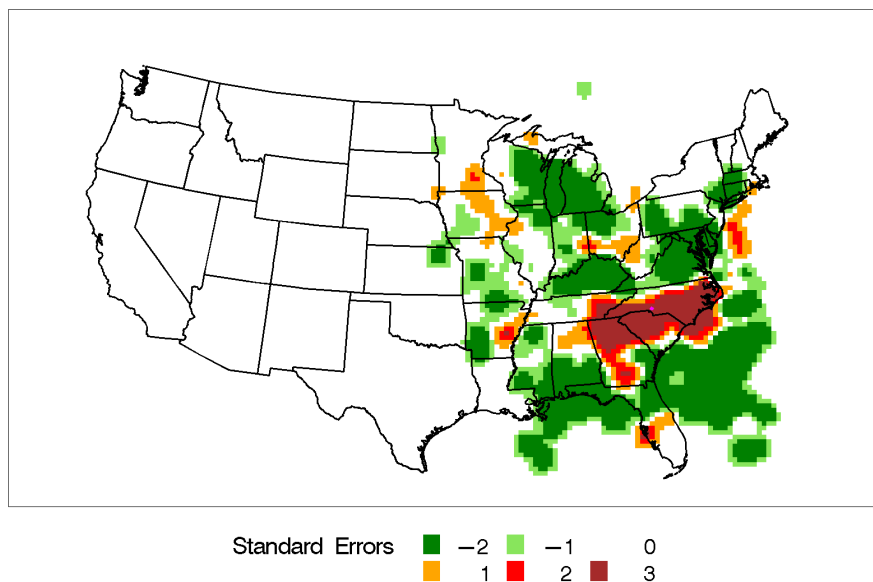


Figure D-46 Incremental Probability Contour Plot for Charlotte, North Carolina, Source 8 - Mobile Sources.

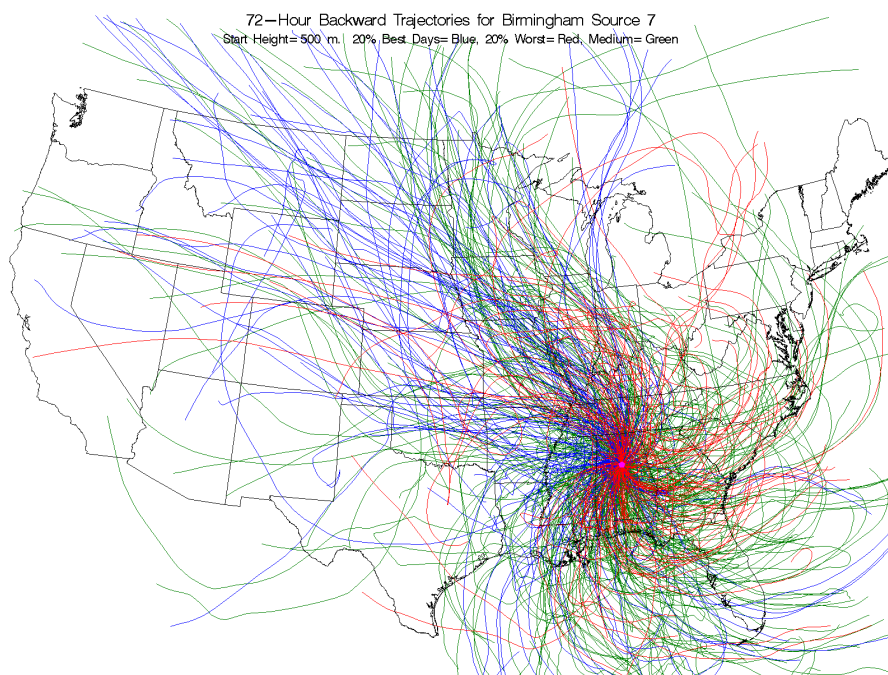
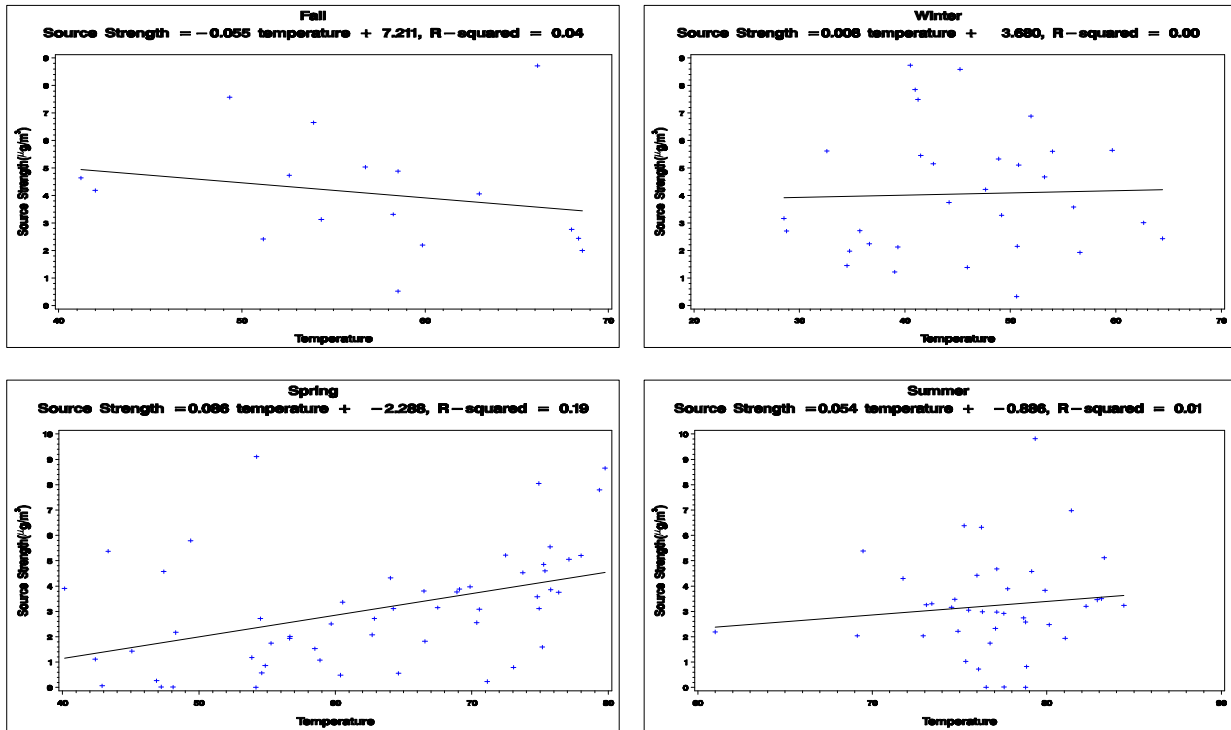


Figure D-47 Back Trajectories Color Coded by Source Strength Category for Charlotte, North Carolina, Source 8 - Mobile Sources.

**Source Strength Versus Mean Daily Temperature
At Charlotte, NC for Source 8**



**Source Strength Versus Mean Daily Pressure
At Charlotte, NC for Source 8**

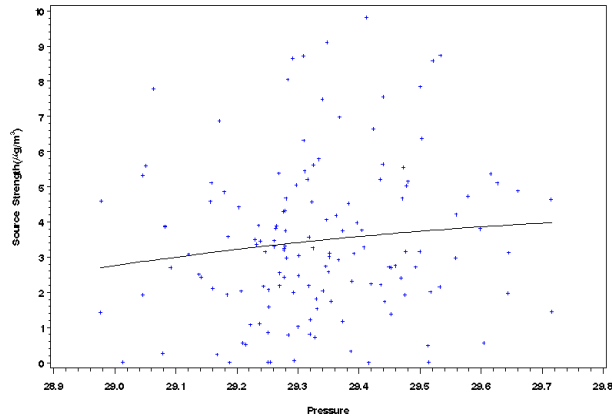


Figure D-48 Scatter Plot of Source Strength Versus Mean Daily Temperature (Rows 1 and 2) and Pressure (bottom) for Charlotte, North Carolina, Source 8 - Mobile Sources.